

Products and Solutions

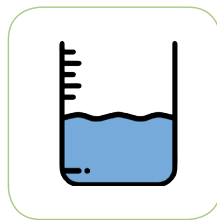
To Measure, Monitor and Control



Flow



Pressure



Level



Temperature



Analytical

For The Process Industries



Product description

KF800 series metallic rotameter is one of Variable-area flowmeter with simple structure,work reliable,,wide application field,high precision,convenient installing,it is suitable for compatible liquids,gases .

KF800DX series metallic rotameter with LCD and 4-20mA electricity signal output, restrict alarm and many kinds of signal.compared with other flowmeters,this series has the characteristics of high-pressureproof,high-temperature proof,safety,ocular reading etc.it is suitable for chemical industry, petroleum, metallurgy, power plant, environmental protection,medical science.

Principle structure

As the fluid flow upward in the tube,the float moves upward to a certain position where the lifting force and the gravitational force are balanced,at the moment,the circulation area between the float and the orifice is kept fixed.the circulation area is proportional to the height of the float,it means the height of the float represent the volumetric flowrate.when the float moves up and down,it transmits its positional to the indicator outside in form of magnetic-coupling,so make the needle of the indicator follows the movement of the float,and by using the cam board to show the value of flowrate linearly on the indicator.

Specification

D N (mm)	Measure Range			Pressure Loss(KPa)			
	Water (L/h)		Air (Nm ³ /h)	Orifice Plate		Cone Pipe	
	Normal Type	Corrosion-proof type		Water	Air	Water	Air
15	2.5~25	--	0.07~0.7	5.5	7.1	2.1	2.6
	4.0~40	2.5~25	0.11~1.1	5.5	7.2	2.1	2.6
	6.3~63	4.0~40	0.18~1.8	5.5	7.3	2.1	2.6
	10~100	6.3~63	0.28~2.8	5.6	7.5	2.1	2.6
	16~160	10~100	0.48~4.8	5.6	8.0	2.1	2.6
	25~250	16~160	0.7~7.0	5.8	10.8	2.1	2.6
	40~400	25~250	1.0~10.0	6.1	10.0	2.1	2.8
25	63~630	40~400	1.6~16	7.3	14.0	2.2	3.2
	100~1000	63~630	3~30	5.7	7.2	2.4	3.2
	160~1600	100~1000	4.5~45	5.9	7.7	2.4	3.3
	250~2500	160~1600	7~70	6.0	8.8	2.5	3.4
	400~4000	250~2500	11~110	6.8	12.0	2.6	3.8
50	630~6300	400~4000	18~180	9.2	19.0	3.0	4.5
	1000~10000	630~6300	25~250	6.8	8.6	3.3	7.4
	1600~16000	1000~10000	40~400	9.4	10.4	3.8	7.7
80	2500~25000	1600~16000	70~700	14.5	15.5	4.3	8.4
	4000~40000	2500~25000	100~1000	6.9	12.9	3.6	6.8
100	6300~63000	4000~40000	160~1600	8.0	18.5	4.6	8.9
	8000~80000	6300~63000	250~2500	8.5	19.2	5.8	12.0
				8.8	19.6	6.4	12.8

AE KFB00 VARIABLE AREA FLOW METER

Converter's Electric Connection For Output Signal And Lcd

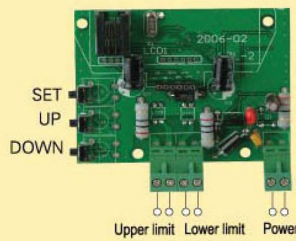
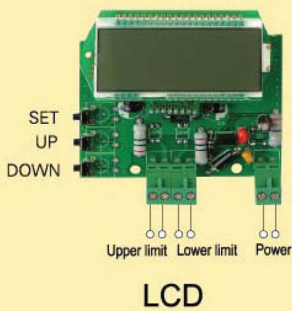
Indication parameter

- 1.LCD indicator: instantaneous delivery number range: 0-60000
integrated flow number range: 0-99999999x5
- 2.indicator convert accuracy: instantaneous value: 0.5%FS±1msd
accumulated value:0.5%FS±1msd
- 3.LCD environment temperature: -10°C ~ +85°C
- 4.datas protect time:10 years if cut off the power supply
- 5.Power supply: tow-wire channel 12VDC-36VDC
- 6.Alarm switch: Solid-state relay, electric current 200mA, voltage 50V
- 7.Explosin-proof mark: Intrinsically safe type:IaIICT5 Flameproof endosure: DII BT4
- 8.Cable API: M20x1.5
9. KF800 needle indication
- 10.KF800D 4-20mA
- 11.KF800DX 4-20mA with LCD display

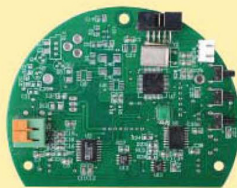


Output signal and LCD converter,s electric connection

(1)wiring diagram



- Upper limit alarm switch AC or DC
- Lower limit alarm switch AC or DC
- Two-wire channel loop 12-36VDC
- Only for F1,F4
- Alarm is optional



LCD

- Two-wire channel loop 12-36VDC
- Only for F2



■ F1 indicator(132x137mm)
304SS



■ F2 indicator(ø135mm)
Flameproof endosure



■ F3 indicator(135x115mm)
Only for DN15,25



■ F4 indicator
(137x141mm)



AE ANDERSON
EUROTECH
VALVES AND INSTRUMENTS

For Your Sales and After Sales, please contact:

Indonesia Sole Distributor

PT. Multi Sukses Pratama

Jl. Bandengan Utara No. 80
Rukan Bandengan Indah D No.20

Jakarta Utara, Indonesia

☎ (62) (21) 29379590, 29379591, 68292838, 8822918 (62)

☎ (21) 29379571

E-mail: sales@suksespratama.com