

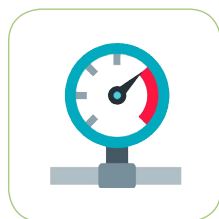


Products and Solutions

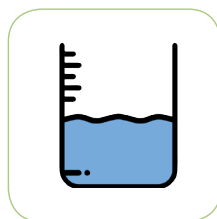
To Measure, Monitor and Control



Flow



Pressure



Level

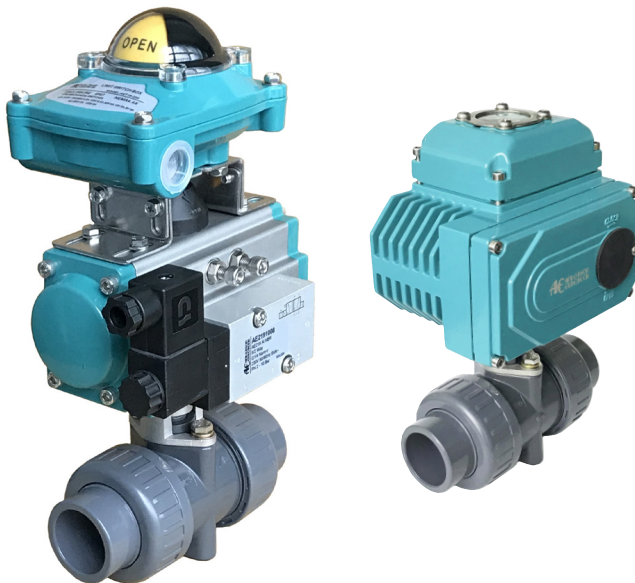


Temperature



Analytical

For The Process Industries



Design

- Double union standard port
- Floating ball with adjustable seat tightness design
- Injection moulded rigid PVC-U body
- Pneumatic or electric actuated for automatic process control application
- Pneumatic actuator is available in double acting (DA) or spring return (SR) version. Wide range of optional accessories including E/P positioner, limit switch box for position feedback, declutchable manual override gearbox and pilot solenoid valves are available to meet various application requirements
- Electric actuator is available in on/off or modulating control version and comes standard with manual override built in
- Actuator is mounted onto the valve in normally open or normally closed position with SS304 customized mounting bracket
- Fully tested before delivery

Specifications - Pneumatic Actuator

| | |
|-------------------------|--|
| Function | Double Acting (DA) or Spring Return (SR) |
| Material | |
| Housing | Extruded aluminum alloy, hard anodized |
| End Cap | Pressure die cast aluminum alloy, epoxy coated |
| Pinion | Carbon steel, nickel plated |
| Piston | Cast aluminum / steel, hard anodized / Zinc galvanized |
| Cap Screw | Stainless steel |
| Spring | Spring steel, Dip Coated |
| Bearing and Guide | Engineering plastic |
| Travel Stop Cam | Alloy steel |
| Adjustment Screw | Stainless steel |
| Seal | NBR |
| Mounting Bracket | Stainless steel |
| Technical Data | |
| Operating Media | Dry or lubricated compressed air or non-corrosive gases |
| Supply Pressure | Min. 2 bar, Max. 8 bar |
| Operating Temperature | -20°C to +80°C (NBR) Lower or higher temperature version on request |
| Rotation | 90° |
| Travel Adjustment | ± 5° |
| Connection and Mounting | Namur, ISO5211 and DIN3337 |
| Torque Output | 3 Nm to 13024 Nm (DA) 4 Nm to 6584 Nm (SR) |
| Selection | Actuator is selected and matched in accordance to each process operating conditions and requirement to ensure proper functioning of the actuated valve |

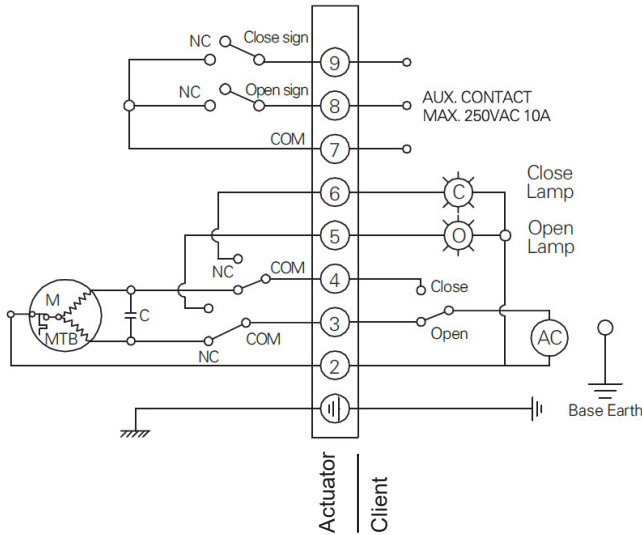
Specifications - Electric Actuator

| | |
|---|---|
| Function | On/Off or Modulating |
| Material | |
| Housing | Aluminum alloy, epoxy powder coated |
| Gear | Steel / aluminum bronze |
| Screws | Stainless steel |
| Indicator Cover | Polycarbonate |
| Shaft / Adaptor | Alloy steel |
| Seal | NBR |
| Lubrication | Aluminum based grease |
| Technical Data | |
| Power Supply | 24VDC, 110VAC, 220VAC |
| Motor | Squirrel cage asynchronous motor |
| Aux Limit Switches | 2 x SPST, 250VAC10A, each for Open and Close positions |
| Rotation | 90° (± 10°) other rotation on request |
| Stall Protection | internal overheating thermal protection, open @ 120°C / close @ 97°C (± 5°C)* |
| Manual Operation | Mechanical system by allen key |
| Conduit Entry | 2 x M18 |
| Operating Temp | -20°C to +70°C |
| Ambient Humidity | Max. 90% RH |
| Vibration Tested | XYZ10g, 0.2~34Hz, 30 minutes |
| Mounting | ISO5211 |
| Torque Output | 30 Nm to 1000 Nm (2000 Nm on request) |
| Self-locking device | Self-locking by worm and worm gear |
| Options Available | |
| Space Heater, 7 ... 10W (110/220VAC)* | |
| Position Feedback Potentiometer (1K ... 10K)* | |
| Position Feedback Sensor with Current output (4 ... 20mA)* | |
| Proportional Control Unit for modulating control (input/output signal, 4 ... 20mA, 1 ... 5 VDC, 1 ... 10VDC)* | |

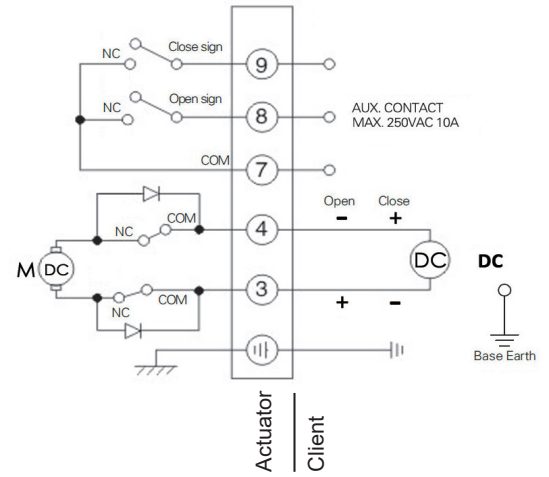
AE TWO WAY PLASTIC BALL VALVE

Electrical Actuator Wiring Diagrams

AC (Single Phase) Version



DC Version



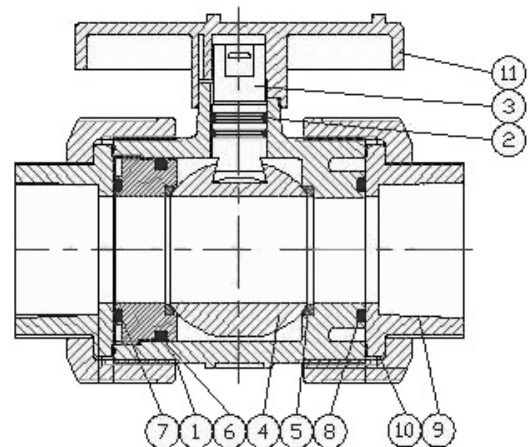
Specifications - Valve

| | |
|------------------|---|
| Construction | 2 way True Union ball valve with union nuts |
| Size range | d13 to d48 (1/2" to 2") |
| Nominal Pressure | 150 psi @ 23°C, 40 psi @ 60°C |
| Port connection | Socket to ASTM (Standard) Socket to DIN or JIS (On request) Threaded to BSP, NPT or Rc (On request) Flanged to DIN, ANSI or JIS (On request) |
| Valve material | PVC-U (CPVC, PP, PVDF on request) |
| Seal material | EPDM seals (FPM on request) PTFE seats |

Ball Valve Material

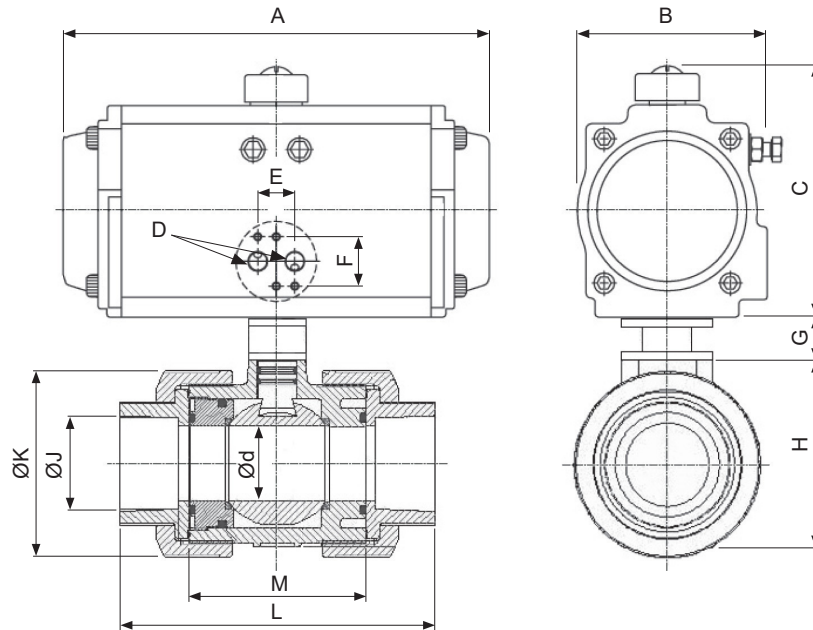
| No | Part | Material | Qty |
|----|----------------|-----------------------|-----|
| 1 | Body | UPVC (CPVC, PP, PVDF) | 1 |
| 2 | Stem O-ring | EPDM (FPM) | 2 |
| 3 | Stem | UPVC (CPVC, PP, PVDF) | 1 |
| 4 | Ball | UPVC (CPVC, PP, PVDF) | 1 |
| 5 | Seat | PTFE | 2 |
| 6 | Carrier O-ring | EPDM (FPM) | 1 |
| 7 | Seal Carrier | UPVC (CPVC, PP, PVDF) | 1 |
| 8 | Union O-ring | EPDM (FPM) | 2 |
| 9 | End Connector | UPVC (CPVC, PP, PVDF) | 2 |
| 10 | Union Nut | UPVC (CPVC, PP, PVDF) | 2 |
| 11 | Handle | ABS (PP) | 1 |

(On Request)



AE TWO WAY PLASTIC BALL VALVE

Pneumatic Actuated Version Common Selection and Dimension (mm)



| Function | Size | Ød | Pressure Range ¹⁾ (bar) | Actuator @ pilot air of min. 5 bar | Dimensions | | | | | | | | | | | Weight (kg) | |
|----------|--------|---------|------------------------------------|------------------------------------|------------|-----|------|------|----|----|-----|------|------------------|------|-----|-------------|-----|
| | | | | | A | B | C | D | E | F | G | H | ØJ ³⁾ | ØK | L | | M |
| DA | 1/2" | 13 | 0 to 10 | AEJAT040DA ²⁾ | 123 | 57 | 86 | G1/8 | 20 | 29 | 34 | 42 | 21.3 | 46.5 | 114 | 60 | 1.4 |
| | | | | AEJAT052DA | 145 | 71 | 98 | G1/4 | 24 | 32 | | | | | | | 1.9 |
| | 3/4" | 18 | 0 to 10 | AEJAT040DA ²⁾ | 123 | 57 | 86 | G1/8 | 20 | 29 | 40 | 53 | 26.7 | 55 | 135 | 73 | 1.5 |
| | | | | AEJAT052DA | 145 | 71 | 98 | G1/4 | 24 | 32 | | | | | | | 2.0 |
| | 1" | 23 | 0 to 10 | AEJAT040DA ²⁾ | 123 | 57 | 86 | G1/8 | 20 | 29 | 40 | 66 | 33.4 | 66 | 149 | 79 | 1.6 |
| | | | | AEJAT052DA | 145 | 71 | 98 | G1/4 | 24 | 32 | | | | | | | 2.1 |
| | 1 1/4" | 30 | 0 to 10 | AEJAT040DA ²⁾ | 123 | 57 | 86 | G1/8 | 20 | 29 | 42 | 74 | 42.2 | 82 | 168 | 88 | 2.0 |
| | | | | AEJAT052DA | 145 | 71 | 98 | G1/4 | 24 | 32 | | | | | | | 2.5 |
| 1 1/2" | 38 | 0 to 10 | AEJAT052DA | 145 | 71 | 98 | G1/4 | 24 | 32 | 42 | 80 | 48.3 | 98 | 175 | 95 | 2.7 | |
| 2" | 48 | 0 to 10 | AEJAT063DA | 169 | 92 | 115 | G1/4 | 24 | 32 | 46 | 105 | 60.3 | 120 | 208 | 114 | 4.2 | |
| SR | 1/2" | 13 | 0 to 10 | AEJAT052SR | 145 | 71 | 98 | G1/4 | 24 | 32 | 34 | 42 | 21.3 | 46.5 | 114 | 60 | 2.0 |
| | 3/4" | 18 | 0 to 10 | AEJAT052SR | 145 | 71 | 98 | G1/4 | 24 | 32 | 40 | 53 | 26.7 | 55 | 135 | 73 | 2.1 |
| | 1" | 23 | 0 to 10 | AEJAT052SR | 145 | 71 | 98 | G1/4 | 24 | 32 | 40 | 66 | 33.4 | 66 | 149 | 79 | 2.2 |
| | 1 1/4" | 30 | 0 to 10 | AEJAT052SR | 169 | 71 | 98 | G1/4 | 24 | 32 | 42 | 74 | 42.2 | 82 | 168 | 88 | 2.6 |
| | 1 1/2" | 38 | 0 to 10 | AEJAT063SR | 169 | 92 | 115 | G1/4 | 24 | 32 | 42 | 80 | 48.3 | 98 | 175 | 95 | 3.6 |
| | 2" | 48 | 0 to 10 | AEJAT075SR | 201 | 98 | 126 | G1/4 | 24 | 32 | 46 | 105 | 60.3 | 120 | 208 | 114 | 5.4 |

¹⁾ Actuator selection serve as a guide and is based on clean lubricating operating media at pressure up to 10 bar. For other operating conditions, please consult us.

²⁾ Actuator is with G1/8 air connection and not suitable for direct mounting of AE219 Namur solenoid valve.

³⁾ In accordance to ASTM standard. Other socket standard, JIS or DIN available on request.

Optional Accessories Available for Pneumatic Actuated Version



Pneumatic Solenoid Valves

- 3/2 way or 5/2 way
- NAMUR interface
- Standard ported
- Gang mounted
- Explosion proof version
- Full stainless steel version



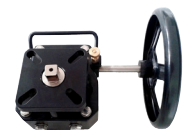
Limit Switch Box for position feedback

- NAMUR interface mounting
- 2 x SPDT mechanical switches
- Explosion proof version



Electro-Pneumatic Positioner

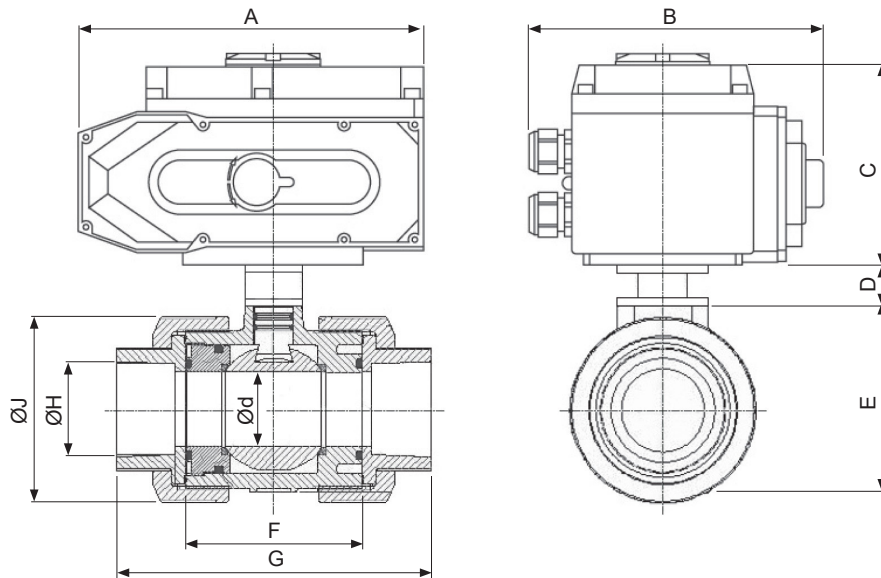
- Single or Double Acting
- NAMUR interface mounting
- Conventional version
- SMART version
- Explosion proof version
- Full stainless steel version



Declutchable Manual Override Gearbox

AE TWO WAY PLASTIC BALL VALVE

Electric Actuated Version Common Selection and Dimension (mm)



| Function | Size | Ød | Pressure Range ¹⁾ (bar) | Actuator | | Dimensions | | | | | | | | Weight (kg) | |
|-----------|--------|----|---------------------------------------|----------|----------|------------|-----|-----|----|-----|-----|-----|------------------|-------------|-----|
| | | | | 24VDC | 220VAC | A | B | C | D | E | F | G | ØH ²⁾ | | ØJ |
| Bi-Stable | 1/2" | 13 | 0 to 10 | AEJMO005 | | 161 | 121 | 125 | 34 | 42 | 60 | 114 | 21.3 | 46.5 | 4.2 |
| | | | | | AEJMO003 | 123 | 100 | 115 | | | | | | | 2.8 |
| | 3/4" | 18 | 0 to 10 | AEJMO005 | | 161 | 121 | 125 | 40 | 53 | 73 | 135 | 26.7 | 55 | 4.3 |
| | | | | | AEJMO003 | 123 | 100 | 115 | | | | | | | 2.9 |
| | 1" | 23 | 0 to 10 | AEJMO005 | | 161 | 121 | 125 | 40 | 66 | 79 | 149 | 33.4 | 66 | 4.4 |
| | | | | | AEJMO003 | 123 | 100 | 115 | | | | | | | 3.0 |
| | 1 1/4" | 30 | 0 to 10 | AEJMO005 | | 161 | 121 | 125 | 42 | 74 | 88 | 168 | 42.2 | 82 | 4.8 |
| | | | | | AEJMO003 | 123 | 100 | 115 | | | | | | | 3.4 |
| | 1 1/2" | 38 | 0 to 10 | AEJMO005 | | 161 | 121 | 125 | 42 | 80 | 95 | 175 | 48.3 | 98 | 5.0 |
| | | | | | AEJMO003 | 123 | 100 | 115 | | | | | | | 3.6 |
| | 2" | 48 | 0 to 10 | AEJMO005 | | 161 | 121 | 125 | 46 | 105 | 114 | 208 | 60.3 | 120 | 5.8 |
| | | | | | AEJMO003 | 123 | 100 | 115 | | | | | | | 4.4 |

¹⁾ Actuator selection serve as a guide and is based on clean lubricating operating media at pressure up to 10 bar. For other operating conditions, please consult us.

²⁾ In accordance to ASTM standard. Other socket standard, JIS or DIN available on request.



AE ANDERSON
EUROTECH
VALVES AND INSTRUMENTS

For Your Sales and After Sales, please contact:

Indonesia Sole Distributor

PT. Multi Sukses Pratama

Jl. Bandengan Utara No. 80
Rukan Bandengan Indah D No.20

Jakarta Utara, Indonesia

☎ (62) (21) 29379590, 29379591, 68292838, 8822918 (62)

☎ (21) 29379571

E-mail: sales@suksespratama.com