



Products and Solutions

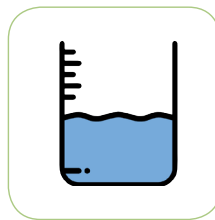
To Measure, Monitor and Control



Flow



Pressure



Level



Temperature



Analytical

For The Process Industries

AEJAT PNEUMATIC ROTARY ACTUATOR (Rack and Pinion Design)



Design

The AEJAT pneumatic rotary actuator is of rack and pinion design where the linear kinetic energy is directly transformed into a "quarter turn" operation with a constant torque output over the full stroke.

Both double acting and spring return actuators have twin pistons horizontally opposed and incorporate piston guides to ensure correct contact between the rack and pinion at all pressure.

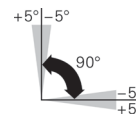
High quality materials are used in the construction of the actuator. The actuator can be readily fitted to any type of ball valve, butterfly valve or other equipment requiring efficient pneumatic actuator.

Full range of accessories, such as limit switch box, solenoid valve, positioner and declutchable manual override gearbox are available.

Specifications

Function	Double Acting (DA) or Spring Return (SR)
Material	
Housing	Extruded aluminum alloy, hard anodized
End Cap	Pressure die cast aluminum alloy, epoxy coated
Pinion	Carbon steel, nickel plated
Piston	Cast aluminum / steel, hard anodized / Zinc galvanized
Cap Screw	Stainless steel
Spring	Spring steel, Dip Coated
Bearing and Guide	Engineering plastic
Travel Stop Cam	Alloy steel
Adjustment Screw	Stainless steel
Seal	NBR (Other seal on request)
Mounting Bracket	Aluminum, stainless steel, alloy steel
Technical Data	
Operating Media	Dry or lubricated compressed air or non-corrosive gases. The max particle diameter must be less than 30um
Supply Pressure	Min. 2 bar, Max. 8 bar
Operating Temperature	-20°C to +80°C (NBR) Lower or higher temperature version on request
Rotation	90°
Travel Adjustment	± 5°
Mounting Connection	Namur, ISO5211 and DIN3337
Torque Output	3 Nm to 13024 Nm (DA) 4 Nm to 6584 Nm (SR)

Features



Travel adjustment range of ±5° for the rotation at 0° and 90°



Air Supply connection in accordance to NAMUR standard for easy installation of pilot solenoid valve



Namur drive pinion and Namur top mounting connection permit direct installation of accessories such as Limit Switch Box and Positioner



Bottom mounting connection in accordance to ISO5211 and DIN3337 standards for direct mounting with valve, gear box or mounting bracket

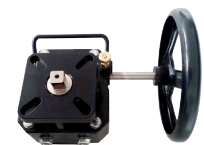
Accessories Available



Limit Switch Box with 2x mechanical or proximity switches



Pilot Solenoid Valve with Namur Interface

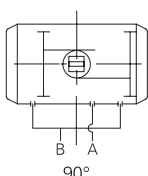
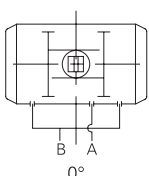


Declutchable Manual Override for emergency or testing operation

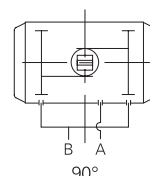
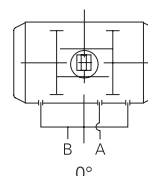
Working Principle

Double Acting

Counter Clockwise Rotation

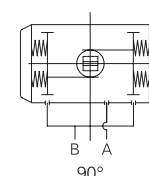
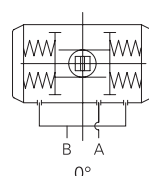


Clockwise Rotation

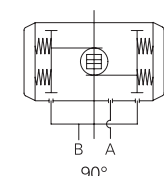
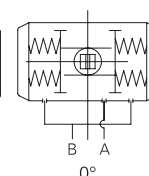


Spring Return

Counter Clockwise Rotation



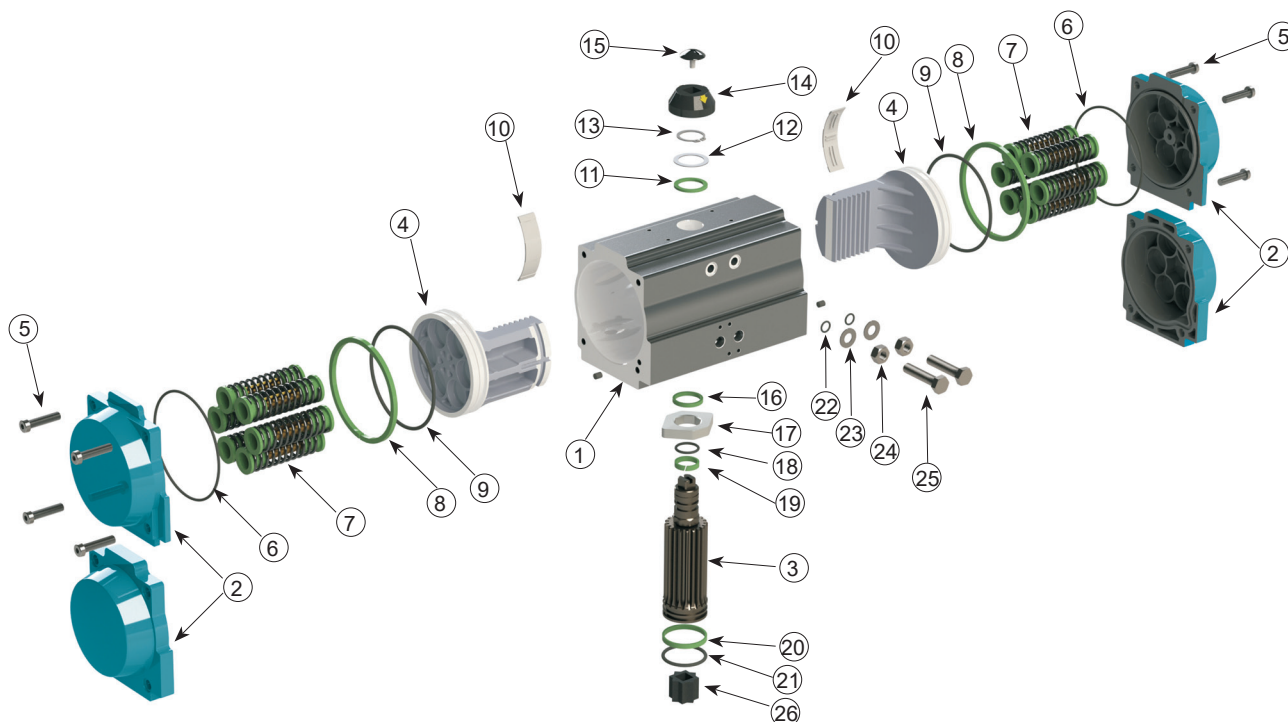
Clockwise Rotation



The specifications given in this document represent the state of engineering at the time of publishing. We reserve the right to make modifications to the specifications and materials.

AEJAT PNEUMATIC ROTARY ACTUATOR (Rack and Pinion Design)

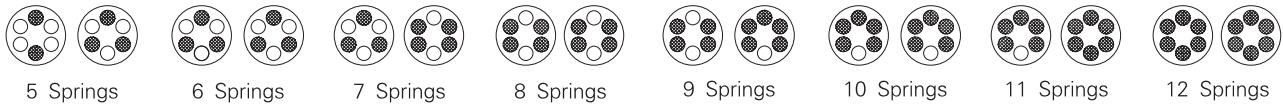
Construction and Materials



No.	Description	Qty	Standard Material	Protection	Optional Material
1	Body	1	Extruded Aluminum Alloy	Hard Anodized	
2	End Cap	2	Cast Aluminum		
3	Shaft	1	Carbon Steel	Nickel Plated	Stainless Steel
4	Piston	2	Cast Aluminum / Steel	Anodized / Zinc Galvanized	Stainless Steel
5	Cap Screw	8	Stainless Steel		
6	O-ring (End Top)	2	NBR		FPM / Silicone
7	Spring	0 - 12	Spring Steel	Dip Coating	
8	Bearing	2	Engineering Plastic		
9	O-ring (Piston)	2	NBR		
10	Guide	2	Engineering Plastic		
11	Outside Washer	1	Engineering Plastic		
12	Thrust Washer	1	Stainless Steel		
13	Spring Clip	1	Stainless Steel		
14	Indicator	1	Plastic		
15	Indicator Screw	1	Plastic		
16	Inside Washer	1	Engineering Plastic		
17	Cam	1	Alloy Steel		
18	O-ring (Shaft)	1	NBR		FPM / Silicone
19	Bearing (Top of Shaft)	1	Engineering Plastic		
20	Bearing (Bottom of Shaft)	1	Engineering Plastic		
21	O-ring (Bottom of Shaft)	1	NBR		FPM / Silicone
22	O-ring (Adjustment Screw)	2	NBR		FPM / Silicone
23	Washer	2	Stainless Steel		
24	Nut	2	Stainless Steel	Powder Polyester Painted	
25	Adjustment Screw	2	Stainless Steel		
26	Shaft Adaptor	1	Sintered Alloy		

AEJAT PNEUMATIC ROTARY ACTUATOR (Rack and Pinion Design)

Spring Positions of Spring Return Actuator



Air Consumption and Opening and Closing Time

Model		AEJAT032	AEJAT040	AEJAT052	AEJAT063	AEJAT075	AEJAT083	AEJAT092	AEJAT105	AEJAT125	
Cylinder Air Volume (L)	Open	0.04	0.08	0.1	0.2	0.3	0.5	0.7	1.2	1.5	
	Close	0.05	0.11	0.2	0.3	0.5	0.8	1.1	1.8	2.3	
Opening & Closing Time (Second)	DA	Open	0.1	0.1	0.2	0.3	0.3	0.4	0.5	0.7	0.9
		Close	0.1	0.1	0.2	0.3	0.4	0.5	0.6	0.8	1.1
	SR	Open	-	-	0.3	0.3	0.4	0.5	0.7	0.9	1.2
		Close	-	-	0.3	0.4	0.5	0.6	0.9	1.1	1.4
Model		AEJAT140	AEJAT160	AEJAT190	AEJAT210	AEJAT240	AEJAT270	AEJAT300	AEJAT350	AEJAT400	
Cylinder Air Volume (L)	Open	2.4	3.1	4.3	5.8	10.0	14.5	23.8	35.1	52.6	
	Close	3.8	4.9	6.9	9.5	15.2	21.4	29.7	46.3	69.4	
Opening & Closing Time (Second)	DA	Open	1.2	1.5	2.0	2.7	3.5	4.0	8.0	10.0	10.0
		Close	1.4	1.7	2.2	3.2	4.0	4.5	10.0	12.0	13.0
	SR	Open	1.5	1.8	2.4	3.5	4.1	4.5	7.0	8.0	8.0
		Close	1.8	2.1	2.8	4.0	4.6	5.0	8.0	9.0	9.0

Double Acting Output Torque (Nm)

Model	Input Air Supply Pressure (Bar)						
	2	3	4	5	6	7	8
AEJAT032DA	3	5	6	8	9	11	12
AEJAT040DA	4.8	7.1	9.6	11.9	14.3	16.7	19.1
AEJAT052DA	8.1	12.1	16.2	20.1	24.2	28.2	32.3
AEJAT063DA	14.3	21.4	28.5	35.6	42.7	49.8	56.7
AEJAT075DA	20	30.2	40.3	50.4	60.4	70.5	80.6
AEJAT083DA	30.9	46.3	61.8	77.1	92.5	108	123.5
AEJAT092DA	44.2	66.3	88.4	110.5	133	154.8	176.7
AEJAT105DA	65.8	98.8	131.6	164.5	197.4	230.4	263.2
AEJAT125DA	102.6	153.9	205.2	256.5	307.8	359.1	410.4
AEJAT140DA	175.5	263.2	351	438.7	526.3	614.2	702.1
AEJAT160DA	267.4	401	534.9	668.8	801.8	935.8	1069.7
AEJAT190DA	450.4	646	861.7	1078.3	1293	1507.7	1723.3
AEJAT210DA	526.3	789.5	1052.6	1314.8	1578.9	1842.1	2105.2
AEJAT240DA	773.3	1160	1546.6	1933.3	2319.9	2706.6	3093.2
AEJAT270DA	1174.2	1761.3	2348.4	2935.5	3522.6	4109.7	4696.8
AEJAT300DA	1610.8	2416.2	3221.6	4027.1	4832.5	5637.9	6443.3
AEJAT350DA	2411.8	3617.6	4823.5	6029.4	7235.3	8441.1	9647.1
AEJAT400DA	3256	4884	6512	8140	9768	11396	13024

AEJAT PNEUMATIC ROTARY ACTUATOR

(Rack and Pinion Design)

Single Acting Output Torque (Nm)

Model	Spring Qty	Air Supply Pressure												Output Torque Spring	
		3 Bar		4 Bar		5 Bar		6 Bar		7 Bar		8 Bar			
		0°	90°	0°	90°	0°	90°	0°	90°	0°	90°	0°	90°	0°	90°
		Start	End	Start	End	Start	End	Start	End	Start	End	Start	End	Start	End
AEJAT052SR	5	8.8	7.3	13.0	11.6									5.4	4.0
	6	8.0	6.3	12.2	10.5	16.5	14.8							6.5	4.7
	7	8.2	5.2	11.5	9.4	15.7	13.7	20.0	17.9					7.6	5.5
	8	6.4	4.1	10.7	8.3	14.9	12.6	19.2	16.8	23.4	21.1			8.6	6.3
	9			9.9	7.3	14.1	11.5	18.4	15.8	22.6	20.0	26.9	24.3	9.7	7.1
	10			9.1	6.2	13.3	10.4	17.6	14.7	21.8	18.9	26.1	23.2	10.8	7.9
	11					12.5	9.4	16.8	13.6	21.0	17.9	25.3	22.1	11.9	8.7
AEJAT063SR	5	15.7	12.5	23.1	20.0									9.9	6.8
	6	14.3	10.5	21.8	18.0	29.3	25.5							11.9	8.1
	7	13.0	8.5	20.4	16.0	27.9	23.5	35.4	31.0					13.9	9.5
	8	11.6	6.5	19.1	14.0	26.6	21.5	34.0	29.0	41.5	36.5			15.9	10.8
	9			17.7	12.0	25.2	19.5	32.7	27.0	40.2	34.5	47.6	42.0	17.9	12.2
	10			16.4	10.0	23.8	17.5	31.3	25.0	38.8	32.5	46.3	40.0	19.9	13.6
	11					22.5	15.5	30.0	23.0	37.5	30.5	44.9	38.0	21.9	14.9
AEJAT075SR	5	27.0	21.6	39.3	34.0									15.5	10.2
	6	24.9	18.5	37.3	30.9	49.7	43.3							18.6	12.2
	7	22.9	15.5	35.3	27.8	47.6	40.2	60.0	52.6					21.7	14.2
	8	20.9	12.4	33.2	24.7	45.6	37.1	58.0	49.5	70.4	61.8			24.8	16.2
	9			31.2	21.6	43.6	34.0	56.0	46.4	68.3	58.7	80.7	71.1	27.8	18.3
	10			29.2	18.5	41.6	30.9	53.9	43.3	66.3	55.7	78.7	68.0	30.9	20.3
	11					39.5	27.8	51.9	40.2	64.3	52.6	76.6	64.9	34.0	22.3
AEJAT083SR	5	33.8	27.2	50.1	43.4									21.5	14.9
	6	30.9	22.9	47.1	39.1	63.3	55.3							25.8	17.8
	7	27.9	18.6	44.1	34.8	60.4	51.0	76.6	67.3					30.1	20.8
	8	24.9	14.3	41.2	30.5	57.4	46.7	73.6	63.0	89.9	79.2			34.4	23.8
	9			38.2	26.2	54.4	42.4	70.7	58.7	86.9	74.9	103.1	91.1	38.7	26.7
	10			35.2	21.9	51.5	38.1	67.7	54.4	83.9	70.6	100.2	86.8	43.0	29.7
	11					48.5	33.8	64.7	50.1	81.0	66.3	97.2	82.5	47.3	32.7
AEJAT092SR	5	48.0	39.5	71.3	62.8									30.3	21.8
	6	43.7	33.5	66.9	56.7	90.2	80.0							36.3	26.1
	7	39.3	27.4	62.6	50.7	85.8	73.9	109.1	97.2					42.4	30.5
	8	34.9	21.4	58.2	44.6	81.5	67.9	104.7	91.2	128.0	114.4			48.4	34.9
	9			53.8	38.6	77.1	61.8	100.4	85.1	123.6	108.4	146.9	131.6	54.5	39.2
	10			49.5	32.5	72.8	55.8	96.0	79.0	119.3	102.3	142.6	125.6	60.6	43.6
	11					68.4	49.7	91.7	73.0	114.9	96.3	138.2	119.5	66.6	47.9
AEJAT105SR	5	64.6	57.7	99.2	92.4									46.2	39.3
	6	56.7	48.5	91.4	83.1	126.0	117.8							55.4	47.2
	7	48.9	39.3	83.5	73.9	118.2	108.5	152.8	143.2					64.6	55.0
	8	41.0	30.0	75.7	64.7	110.3	99.3	144.9	133.9	179.6	168.6			73.9	62.9
	9			67.8	55.4	102.4	90.1	137.1	124.7	171.7	159.3	206.3	194.0	83.1	70.7
	10			59.9	46.2	94.6	80.8	129.2	115.5	163.9	150.1	198.5	184.7	92.3	78.6
	11					86.7	71.6	121.4	106.2	156.0	140.9	190.6	175.5	101.6	86.5
12					78.9	62.4	113.5	97.0	148.1	131.6	182.8	166.3	110.8	94.3	

AEJAT PNEUMATIC ROTARY ACTUATOR

(Rack and Pinion Design)

Single Acting Output Torque (Nm)

Model	Spring Qty	Air Supply Pressure												Output Torque Spring	
		3 Bar		4 Bar		5 Bar		6 Bar		7 Bar		8 Bar			
		0°	90°	0°	90°	0°	90°	0°	90°	0°	90°	0°	90°	0°	90°
		Start	End	Start	End	Start	End	Start	End	Start	End	Start	End	Start	End
AEJAT125SR	5	131	104	192	166									80	53
	6	120	88	182	150	243	211							96	64
	7	110	72	171	134	232	195	294	257					112	74
	8	99	56	161	118	222	179	283	241	345	302			128	85
	9			150	102	211	163	273	225	334	286	395	347	144	96
	10			139	86	201	147	262	209	323	270	385	331	160	106
	11					190	131	251	193	313	254	374	315	175	117
	12					179	115	241	177	302	238	363	299	191	127
AEJAT140SR	5	188	144	280	236									133	89
	6	170	117	263	209	355	302							160	107
	7	152	90	245	183	337	275	430	368					187	125
	8	135	64	227	156	319	249	412	341	504	433			213	142
	9			209	129	302	222	394	314	486	407	579	499	240	160
	10			191	103	284	195	376	288	469	380	561	472	267	178
	11					266	169	358	261	451	353	543	446	293	196
	12					248	142	341	234	433	327	525	419	320	214
AEJAT160SR	5	286	222	427	362									201	136
	6	259	182	400	322	541	463							241	163
	7	232	141	373	282	513	423	654	564					281	190
	8	205	101	345	242	486	383	627	524	768	664			321	218
	9			318	202	459	343	600	483	741	624	881	765	361	245
	10			291	162	432	303	573	443	713	584	854	725	401	272
	11					405	263	545	403	686	544	827	685	441	299
	12					377	222	518	363	659	504	800	645	481	326
AEJAT190SR	5	448	332	675	559									349	232
	6	402	262	629	489	856	716							418	278
	7	356	192	582	419	809	646	1036	873					488	325
	8	309	123	536	350	763	576	990	803	1217	1030			558	371
	9			490	280	717	507	943	733	1170	960	1397	1187	627	418
	10			443	210	670	437	897	664	1124	891	1351	1117	697	464
	11					624	367	851	594	1077	821	1304	1048	767	510
	12					577	297	804	524	1031	751	1258	978	837	557
AEJAT210SR	5	638	468	950	780									467	297
	6	579	375	890	687	1202	998							560	356
	7	519	282	831	593	1143	905	1455	1217					654	416
	8	460	188	772	500	1083	812	1395	1123	1707	1435			757	475
	9			712	407	1024	718	1336	1030	1647	1342	1959	1653	840	535
	10			653	313	965	625	1276	937	1588	1248	1900	1560	934	594
	11					905	531	1217	843	1529	1155	1840	1467	1027	653
	12					846	438	1158	750	1469	1062	1781	1373	1121	713
AEJAT240SR	5	963	666	1452	1155									799	503
	6	862	506	1351	995	1840	1484							959	603
	7	762	346	1250	835	1739	1324	2228	1812					1119	704
	8	661	187	1150	675	1639	1164	2127	1652	2616	2141			1279	804
	9			1049	515	1538	1004	2027	1492	2515	1981	3004	2470	1439	905
	10			949	355	1437	844	1926	1333	2415	1821	2903	2310	1599	1005
	11					1337	684	1825	1173	2315	1661	2803	2150	1759	1106
	12					1236	524	1725	1013	2213	1501	2702	1990	1919	1207

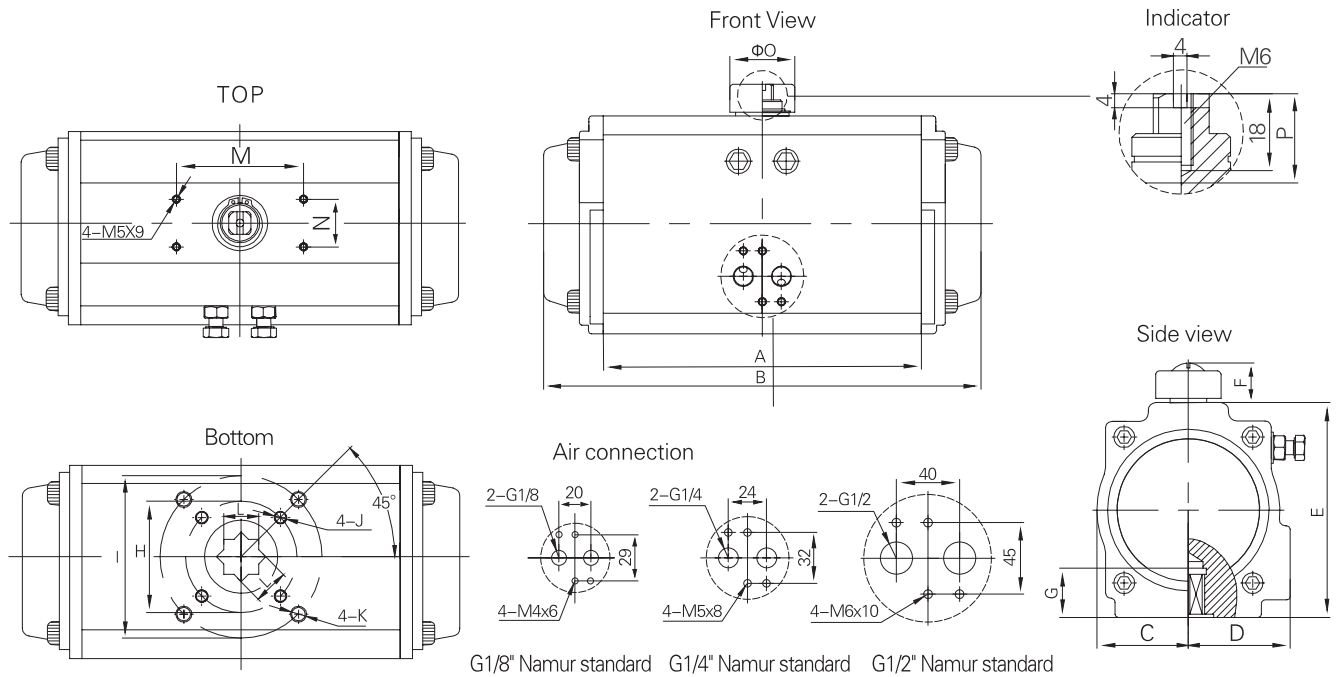
AEJAT PNEUMATIC ROTARY ACTUATOR (Rack and Pinion Design)

Single Acting Output Torque (Nm)

Model	Spring Qty	Air Supply Pressure												Output Torque Spring	
		3 Bar		4 Bar		5 Bar		6 Bar		7 Bar		8 Bar		0°	90°
		0° Start	90° End	0° Start	90° End	0° Start	90° End	0° Start	90° End	0° Start	90° End	0° Start	90° End	0° Start	90° End
AEJAT270SR	5	1431	1028	2118	1715									1033	630
	6	1305	821	1992	1508	2679	2195							1240	765
	7	1179	615	1866	1302	2553	1989	3240	2676					1446	882
	8	1053	408	1740	1095	2427	1782	3114	2469	3801	3156			1653	1008
	9			1614	889	2301	1576	2988	2263	3675	2950	4363	3637	1860	1134
	10			1488	682	2175	1369	2862	2056	3549	2743	4237	3430	2066	1260
	11					2049	1162	2736	1849	3423	2536	4111	3223	2273	1386
	12				1923	956	2610	1643	3297	2330	3985	3017	2480	1512	
AEJAT300SR	6	1316	875											1273	876
	7	1153	639	1916	1402									1485	1022
	8	991	403	1754	1166	2517	1929							1697	1168
	9			1592	930	2355	1693	3118	2456					1909	1314
	10			1430	695	2193	1458	2956	2221	3719	2984	4482	3747	2122	1460
	11					2030	1222	2793	1985	3556	2748	4319	3511	2334	1606
	12				1868	986	2631	1749	3394	2512	4157	3275	2546	1752	
AEJAT350SR	6	1863	1157											2043	1408
	7	1602	779	2745	1922									2383	1642
	8	1341	401	2484	1544	3626	2686							2724	1877
	9			2224	1165	3336	2307	4508	3449					3064	2112
	10			1963	787	3105	1929	4247	3071	5390	4214	6532	5356	3405	2346
	11					2844	1551	3986	2693	5129	3836	6271	4978	3745	2581
	12				2584	1172	3726	2314	4869	3457	6011	4599	4086	2816	
AEJAT400SR	8	2550	1225											3292	2100
	9	2259	768	3887	2396									3703	2362
	10	1967	311	3595	1939	5223	3567							4115	2624
	11			3303	1482	4931	3110	6559	4738					4526	2887
	12			3012	1025	4640	2653	6268	4281	7895	5908	9523	7536	4938	3149
	13					4348	2195	5976	3823	7603	5450	9231	7078	5349	3412
	14					4057	1738	5685	3366	7312	4993	8940	6621	5761	3674
	15				3765	1281	5393	2909	7020	4536	8648	6164	6172	3937	
	16						5101	2452	6728	4079	8356	5707	6584	4199	

AEJAT PNEUMATIC ROTARY ACTUATOR (Rack and Pinion Design)

Dimension (mm)



G1/8" Namur standard G1/4" Namur standard G1/2" Namur standard

Model		A	B	C	D	E	F	G	H	I	J	K	L	M	N	ØO	P	Air Supply	Weight (kg)
AEJAT032	DA	90	112	23.5	23.5	45	26	12	F03	-	4-M5x8	-	9x9	50	30	34	20	G1/8	0.55
	SR																		-
AEJAT040	DA	93	123	23.5	33	60	26	12	F03	F05	4-M5x8	4-M6x10	11x11	50	30	34	20	G1/8	0.66
	SR																		-
AEJAT052	DA	108	145	30	41	72	26	15	F03	F05	4-M5x8	4-M6x10	11x11	80	30	34	20	G1/4	1.2
	SR																		1.3
AEJAT063	DA	125	169	46	46	89	26	15	F05	F07	4-M6x10	4-M8x12	14x14	80	30	34	20	G1/4	1.9
	SR																		2.1
AEJAT075	DA	128	201	42	52	100	26	15	F05	F07	4-M6x10	4-M8x12	14x14	80	30	34	20	G1/4	2.8
	SR																		3.1
AEJAT083	DA	147	209	46	55	109	26	15	F05	F07	4-M6x10	4-M8x12	14x14	80	30	34	20	G1/4	3.2
	SR																		3.7
AEJAT092	DA	168	242	51	57.5	117	26	20	F05	F07	4-M6x10	4-M8x12	17x17	80	30	41	20	G1/4	4.6
	SR																		5.2
AEJAT105	DA	186	275	58	64	134	26	25	F07	F10	4-M8x12	4-M10x16	22x22	80	30	41	20	G1/4	6.1
	SR																		7.1
AEJAT125	DA	207	332	67.5	70	157	36	25	F07	F10	4-M8x12	4-M10x16	22x22	80	30	62	30	G1/4	9.5
	SR																		10.9
AEJAT140	DA	268	400	76	77	174	36	30	F10	F12	4-M10x16	4-M12x20	27x27	130	30	62	30	G1/4	13.7
	SR																		15.7
AEJAT160	DA	308	455	87.5	87.5	199	38	30	F10	F12	4-M10x16	4-M12x20	27x27	130	30	62	30	G1/4	20.5
	SR																		23.6
AEJAT190	DA	390	507	103	103	232	38	40	-	F12	-	4-M12x20	36x36	130	30	79	30	G1/4	31.1
	SR																		35.3
AEJAT210	DA	390	562	113	113	257	38	40	-	F12	-	4-M12x20	36x36	130	30	79	30	G1/4	41.8
	SR																		46.6
AEJAT240	DA	430	646	129	129	293	38	52	-	F16	-	4-M20x24	46x46	130	30	79	30	G1/4	62.4
	SR																		72.4
AEJAT270	DA	510	722	146	146	333	38	52	-	F16	-	4-M20x24	46x46	130	30	79	30	G1/4	86.3
	SR																		98.3
AEJAT300	DA	579	825	162	173	354	38	52	-	F16	-	4-M20x24	46x46	130	30	79	30	G1/2	103
	SR																		143
AEJAT350	DA	580	866	190	195	410	38	52	-	F16	-	4-M20x24	46x46	130	30	79	30	G1/2	144
	SR																		188
AEJAT400	DA	-	924	258	258	464	38	60	-	F25	-	8-M16X24	55X55	130	30	79	30	G1/2	289
	SR																		360



AE ANDERSON
EUROTECH
VALVES AND INSTRUMENTS

For Your Sales and After Sales, please contact:

Indonesia Sole Distributor

PT. Multi Sukses Pratama

Jl. Bandengan Utara No. 80
Rukan Bandengan Indah D No.20

Jakarta Utara, Indonesia

☎ (62) (21) 29379590, 29379591, 68292838, 8822918 (62)

☎ (21) 29379571

E-mail: sales@suksespratama.com