



Products and Solutions

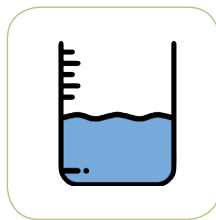
To Measure, Monitor and Control



Flow



Pressure



Level



Temperature



Analytical

For The Process Industries

Pneumatic control valve Catalogue

- Pneumatic control valve
- Control pressure
 - Control flow rate
 - Control temperature...ect

Application

ZXP/ZXM Series Pneumatic control valve application range covers control tasks in process engineering and industrial applications as well as in supply and power plant engineering. The modular system allows easy retrofitting and servicing.

They can be equipped with pneumatic, electric, or hand-operated actuators. For controlling purposes and travel indication, accessories such as positioners, limit switches and solenoid valves can either be attached directly.

Nominal valve Size: DN15~DN350

Connection type: Flange、Screw、welding...ect

Nominal pressure: PN16~PN160 ANSI150~ANSI900

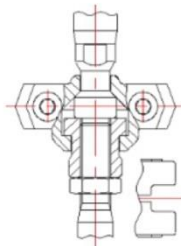
Valve body material: WCB、WCC、LCC、LCB、CF8、CF3..Ect

Temperature: For liquids, gas and steam up to 450° C

Actuator type: Multi-spring diaphragm and piston

Single seat control valve Features

- Compact and simple structure
- Special designed, So the plug is strong not easy to break off.
- High accuracy of adjustment.
- Excellent sealing, low leakage.
- Easy to maintain and disassembly.
- Plug with soft seal option for high sealing requirements
- Unique valve rod guide as below picture to avoid valve rod rotate, finally to avoid positioner not accuracy.

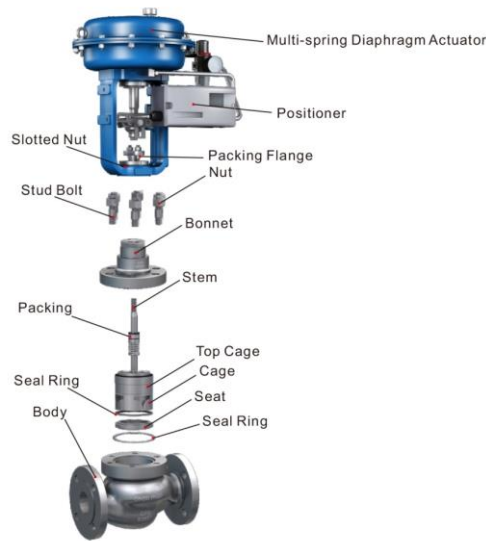


- Consist of two runners which has formed a sigmate shape. This can reduce the flow resistance and turbulent to keep the media running fluently. The flap in the middle of the top runner can reduce the eddy flow and increase the flow capacity.



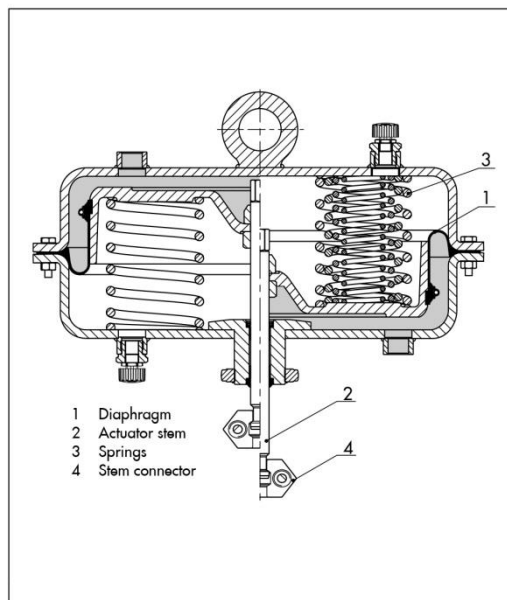
AE PNEUMATIC CONTROL VALVE

Pneumatic control valve drawing



P Series Single-seat Control Valve is adopted top-guided structure, which features compact structure, small size, light weight, sensitive action and so on. The flow channel is an S streamline, with advantages such as small loss of pressure drop, large flow capacity, accurate flow characteristics, and easy maintenance, etc. Equipped with multi-spring actuator or electric actuator, it can be used in harsh working conditions. It is especially suitable for working situations where the allowable leakage is small and the pressure difference is not large between the front and back of the valve.

Multi-spring actuator drawing

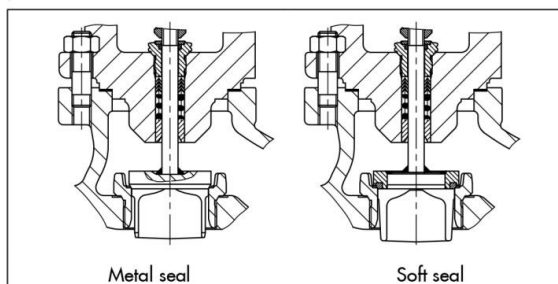
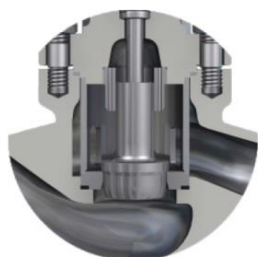


Actuators convert the control signal from, for example a positioner into a travel motion carried out by the valve (plug stem with valve plug). Pneumatic and electric actuators as well as hand-operated actuators are available

Different signal pressure ranges are available. Pneumatic actuators are suitable for use in hazardous areas and feature fail-safe action (upon air supply failure, the control valve is either closed or opened).

AE PNEUMATIC CONTROL VALVE

ZXP Serise Pneumatic control valve plug drawing



The seat, plug and plug stem are made of stainless steel. In some cases, the trims are subject to high stress due to high differential pressures, cavitation, flashing or in cases where the process media contains solids. In order to increase the service life, seats and metal-seated plugs can have a Stellite facing and plugs up to DN 100 can be made of solid Stellite. The seats are screwed into place, allowing them to be easily exchanged. They may also be made of other materials.

The seat leakage is determined according to ANSI B16.104, which specifies the maximum amount of the test process medium (gas or water) that may flow through the closed control valve under test conditions.

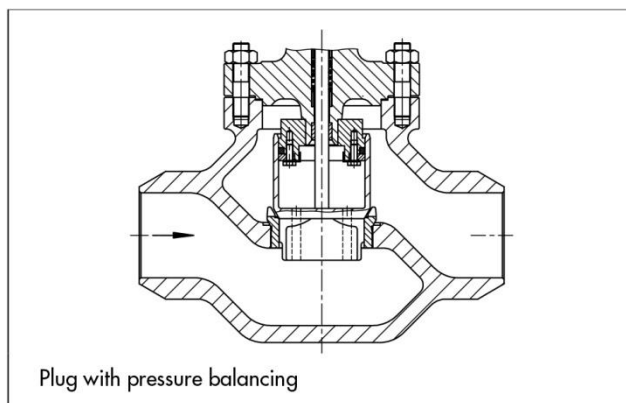
ZXM Series Cage guide control valve Features

- Cage internal wall guided
- Good dynamic stability.
- Low impetus required
- Anti-erosion.
- High differential pressure allowed.
- Low maintain cost.



Cage guid valve plug

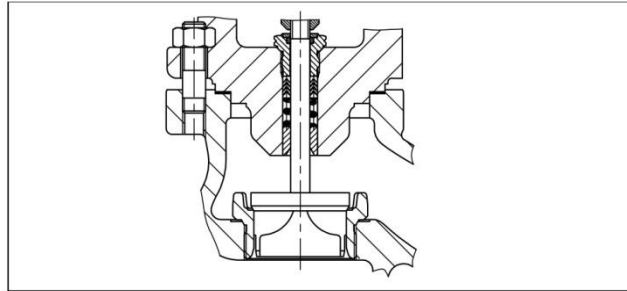
The plug is designed to function as a piston. The upstream pressure is transferred to the back of the plug through a hole in the bottom of the plug. The forces acting on the plug are compensated for, with exception of the area around the plug stem. Pressure-balanced plugs are additionally sealed with a PTFE ring or a graphite ring. The pressure-balanced components are subject to wear. As a result, the seat leakage rate and the amount of maintenance needed for these valves increase. Pressure-balanced plugs should not be used, if at all possible, for media that contain solids or crystallize.



AE PNEUMATIC CONTROL VALVE

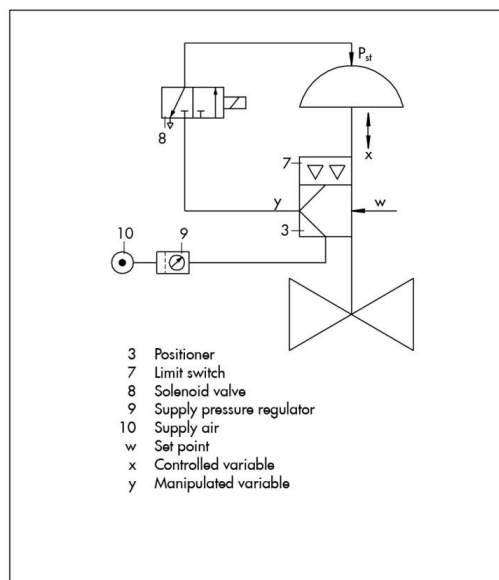
Valve bonnets

The valve bonnet closes the valve at the top and provides room for the stuffing box and the plug stem guide. The valve bonnet and the packing gland are incorporated in one piece. The valve bonnet and the packing gland are bolted together. The valve bonnet is a pressure-bearing part that is exposed to the process medium, therefore its material is subject to the same design requirements as the valve body.



1. Adjustable, cavity-free PTFE-silk/PTFE-carbon packing. Especially suitable for process media that crystallize out or polymerize.
2. Adjustable, cavity-free packing made of woven PTFE-silk. Application for all chemicals including hot acids and alkali solutions
3. Spring-loaded V-ring packing made of pure PTFE. Suitable for pure process media in case carbon particles would contaminate the process medium
4. Adjustable high-temperature packing made of graphite and carbon rings. Especially suitable for superheated steam.

Valve accessories

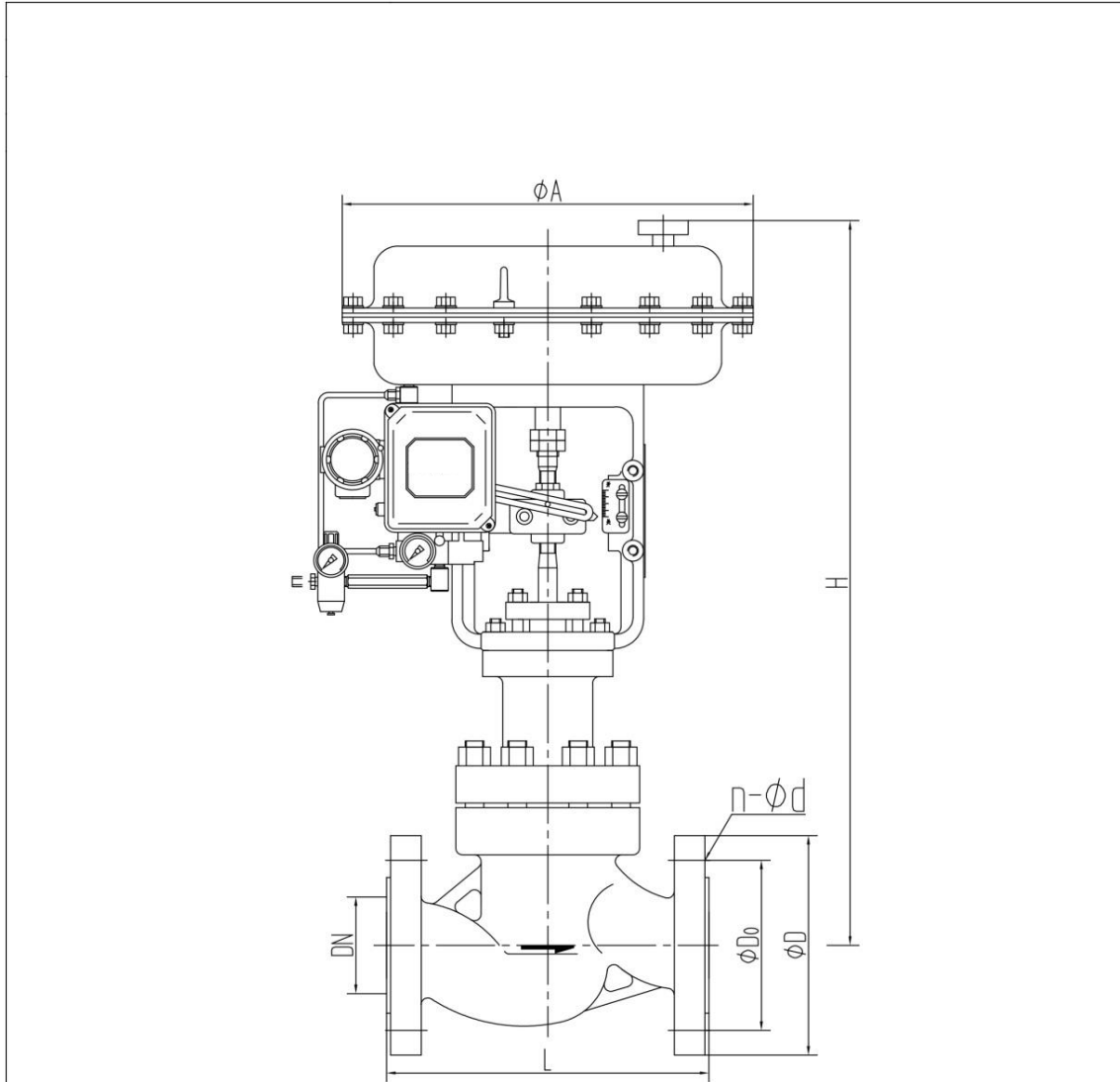


Hook-up of a pneumatic actuator with positioner, limit switch and solenoid valve drawing

Positioners ensure a predetermined assignment of the valve position (controlled variable x) to the input signal (reference variable w). They compare the control signal issued by pneumatic or electric automation equipment (controller, control station, process control system) to the position or opening angle of the control valve and supply a corresponding output signal pressure (p_{st} , output variable y). Positioners are often used as servo-booster as they convert low-energy signals into strong proportional signal pressures. They can be used in standard and split-range operation.

AE PNEUMATIC CONTROL VALVE

ZXP-16/ZXP-40 outlet drawing



ZXP-16/ZXP-40 Outlet drawing(Unit:mm)

Actuator	PZM280K(I)			PZM400K(I)			PZM600K(I)			PZM1000K		
DN	DN15	DN20	DN25	DN32	DN40	DN50	DN65	DN80	DN100	DN125	DN150	DN200
L	130	150	160	180	200	230	290	310	350	400	480	568
H	440	447	447	468	468	480	606	625	627	742	756	845
A	282	282	282	310	310	310	398	398	398	498	498	498
D	95	105	115	140	150	165	185	200	220	250	285	340
D0	65	75	85	100	110	125	145	160	180	210	240	295
n-d	4-14	4-14	4-14	4-18	4-18	4-18	8-18	8-18	8-18	8-18	8-22	12-22

ZXP-16/ZXP-40 Type
control valve





AE ANDERSON
EUROTECH
VALVES AND INSTRUMENTS

For Your Sales and After Sales, please contact:

Indonesia Sole Distributor

PT. Multi Sukses Pratama

Jl. Bandengan Utara No. 80
Rukan Bandengan Indah D No.20

Jakarta Utara, Indonesia

☎ (62) (21) 29379590, 29379591, 68292838, 8822918 (62)

☎ (21) 29379571

E-mail: sales@suksespratama.com