



Products and Solutions

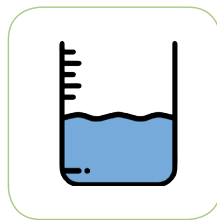
To Measure, Monitor and Control



Flow



Pressure



Level



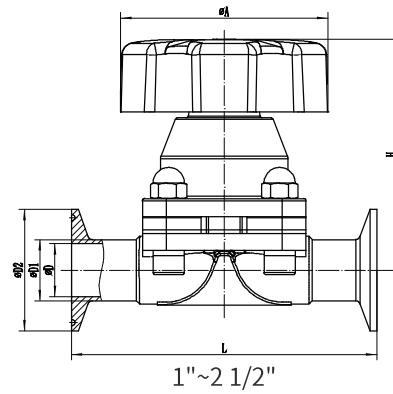
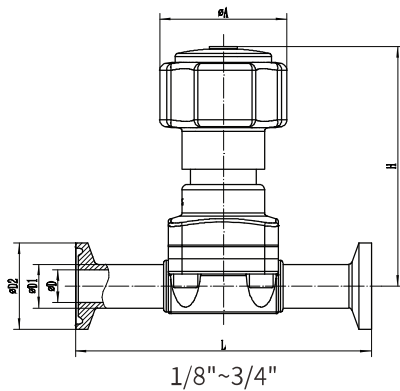
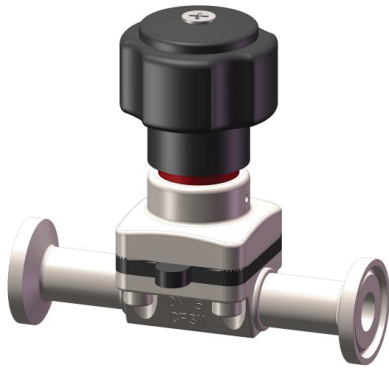
Temperature



Analytical

For The Process Industries

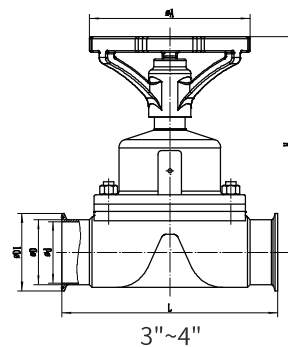
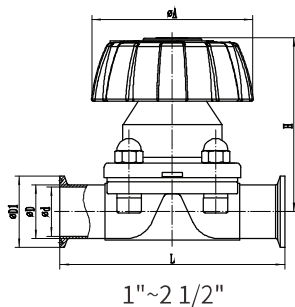
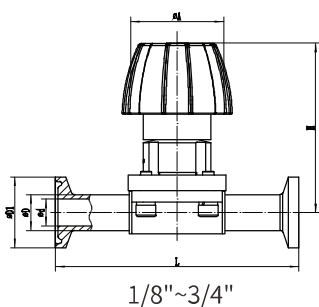
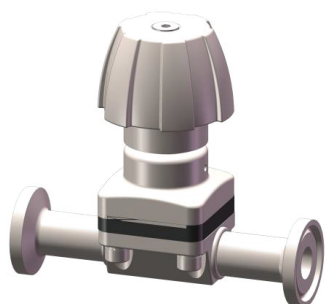
AE MANUAL DIAPHRAGM VALVE (Plastic Handwheel)



Size

SIZE	L	d	D	D1	H	A
1/8"	86	4	6.4	25	70	37
1/4"	86	6	8.4	25	70	37
3/8"	36	7.4	10	25	70	37
1/2"	86	9.4	12.7	25	70	37
3/4"	108	15.8	19.1	25	80	60
1"	127	22.1	25.4	50.5	96	86
1 1/4"	146	28.5	31.8	50.5	100	86
1 1/2"	159	34.8	38.1	50.5	110	110
2"	190	47.5	50.8	64.0	125	130
2 1/2"	216	59.5	63.5	77.5	130	130

AE MANUAL DIAPHRAGM VALVE (Stainless Steel Handwheel)

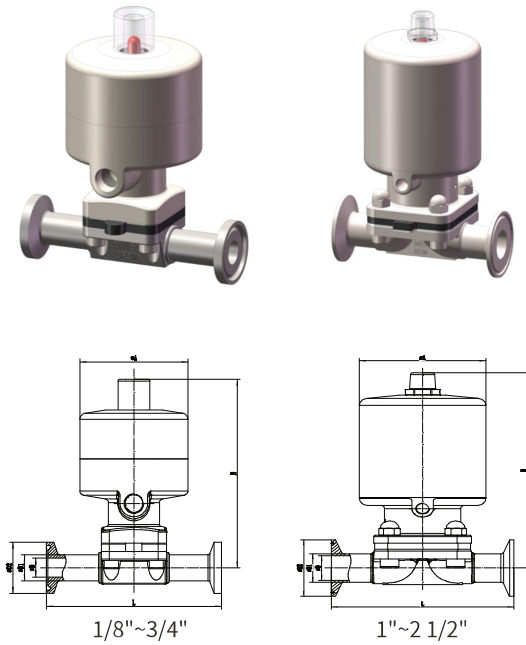


Size

SIZE	L	d	D	D1	H	A
1/8"	86	4	6.4	25	70	39
1/4"	86	6	8.4	25	70	39
3/8"	86	7.4	10	25	70	39
1/2"	86	9.4	12.7	25	70	39
3/4"	108	15.8	19.1	25	75	61
1"	127	22.1	25.4	50.5	98	86
1 1/4"	146	28.5	31.8	50.5	102	86
1 1/2"	159	34.8	38.1	50.5	110	120
2"	190	47.5	50.8	64.0	125	145
2 1/2"	216	59.5	63.5	77.5	130	145
3"	254	72.2	76.2	91	259	190
4"	卡362	97.4	101.6	119	298	190
	焊319					

AE PNEUMATIC DIAPHRAGM VALVE (Stainless Steel Cylinder)

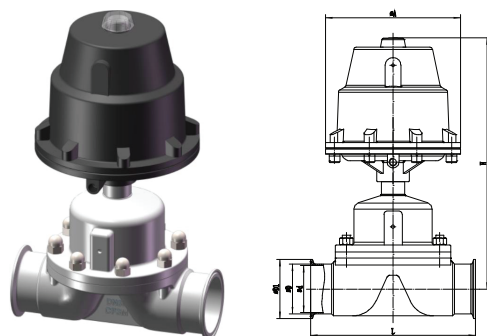
Pneumatic Diaphragm Valve - Stainless Steel Cylinder



Size

SIZE	L	d	D	D1	H	A	Actuator
1/8"	86	4	6.4	25	93	53	φ45
1/4"	86	6	8.4	25	93	53	φ45
3/8"	86	7.4	10	25	93	53	φ45
1/2"	86	9.4	12.7	25	93	53	φ45
3/4"	108	15.8	19.1	25	140	67	φ60
1"	127	22.1	25.4	50.5	177	88	φ80
1 1/4"	146	28.5	31.8	50.5	182	88	φ80
1 1/2"	159	34.8	38.1	50.5	216	109	φ100
2"	190	47.5	50.8	64.0	230	109	φ100
2 1/2"	216	59.5	63.5	77.5	242	109	φ100

Pneumatic diaphragm valve - Aluminum alloy cylinder



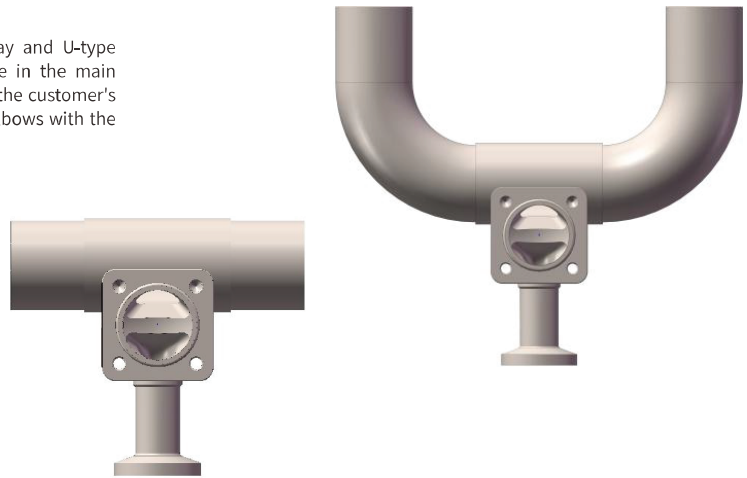
Size

SIZE	L	d	D	D1	H	A	Actuator
3"	254	72.2	76.2	91	391	220	φ160
4"	362	97.4	101.6	119	418	220	φ160
	319						

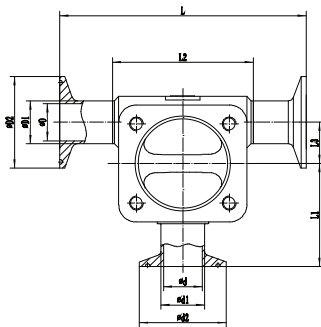
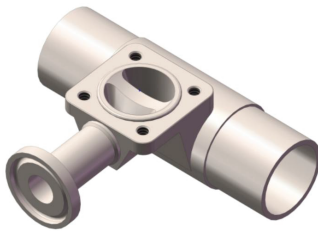
AE THREE WAY DIAPHRAGM VALVE

Three way diaphragm valve

The three-way diaphragm valve is divided into T-type three-way and U-type three-way, which are mainly used for sampling or water intake in the main pipeline. But the final usage depends on the scene. According to the customer's process requirements and installation needs, the front and rear elbows with the same diameter as the main pipe can be selected.



Three-way T-type diaphragm valve

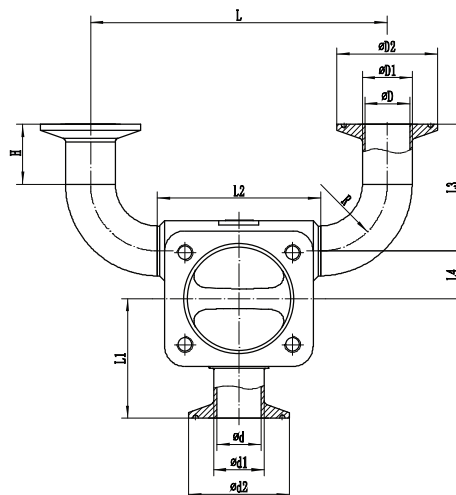
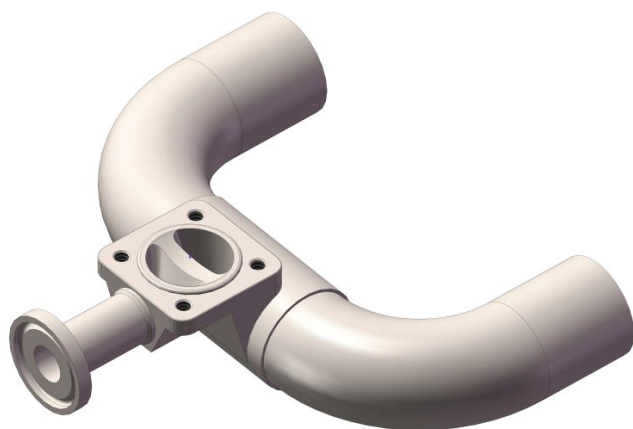


Model

Model	L	L1	L2	L3	d	d1	d2	D	D1	D2
DN5X15	84	43	42	10	9.4	127	25/505	9.4	12.7	25/50.5
DN20X15	84	43	42	13	9.4	12.7	25/505	15.8	19.1	25/50.5
DN25X15	84	43	42	17	9.4	12.7	25/50.5	22.1	25.4	50.5
DN20X20	117	53	60	13.5	15.8	19.1	25/505	15.8	19.1	25/50.5
DN25X20	117	53	60	18	15.8	19.1	25/50.5	22.1	25.4	50.5
DN32X20	117	53	60	18	15.8	19.1	25/50.5	28.5	31.8	50.5
DN40X20	139	60	82	26	15.8	19.1	25/505	34.8	38.1	50.5
DN50X20	117	53	60	26	15.8	19.1	25/50.5	47.5	50.8	64
DN65X20	117	53	60	31	15.8	19.1	25/50.5	59.5	63.5	77.5
DN25X25	139	60	82	24	22.1	25.4	50.5	22.1	25.4	50.5
DN32X25	139	60	82	25	22.1	25.4	50.5	28.5	31.8	50.5
DN40X25	139	60	82	26	22.1	25.4	50.5	34.8	38.1	50.5
DN50X25	139	60	82	34	22.1	25.4	50.5	47.5	50.8	64
DN65X25	139	60	82	42	22.1	25.4	50.5	59.5	63.5	77.5
DN32X32	139	60	82	25	28.5	31.8	50.5	28.5	31.8	50.5
DN40X32	139	60	82	28	28.5	31.8	50.5	34.8	38.1	50.5
DN50X32	139	60	82	31	28.5	31.8	50.5	47.5	50.8	64
DN40X40	167	72	110	31	34.8	38.1	50.5	34.8	38.1	50.5
DN50X40	167	72	110	34	34.8	38.1	50.5	47.5	50.8	64
DN65X40	167	72	110	42	34.8	38.1	50.5	59.5	63.5	50.5
DN50X50	187	85	130	34	47.5	50.8	64	47.5	50.8	64
DN65X50	187	85	130	42	47.5	50.8	64	59.5	63.5	77.5
DN80X80	242	125	185	82	80	89	106	80	89	106

AE THREE WAY U-TYPE DIAPHRAGM VALVE

Three-way U-type diaphragm valve



Model

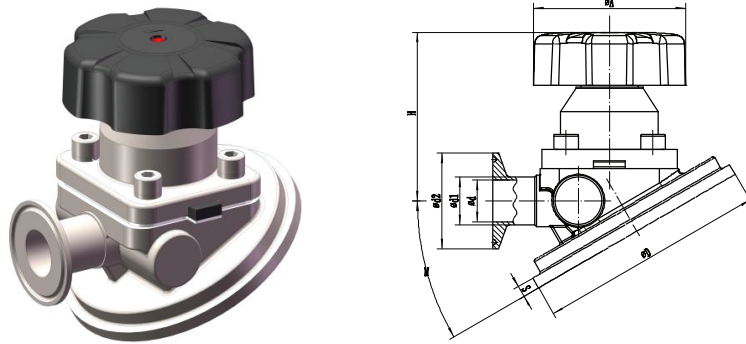
Model	L	L1	L2	L3	L4	d	d1	d2	D	D1	D2	H	R
DN5X15	79	43	42	43.6	10	9.4	12.7	25/50.5	9.4	12.7	25/50.5	25	19.1
DN20X15	98	43	42	53	13	9.4	12.7	25/50.5	15.8	19.1	25/50.5	25	28.5
DN25X15	108	43	42	58	17	9.4	12.7	25/50.5	22.1	25.4	50.5	25	33.5
DN20X20	116	53	60	56	13.5	15.8	19.1	25/50.5	15.8	19.1	25/50.5	28	28.5
DN25X20	126	53	60	61	18	15.8	19.1	25/50.5	22.1	25.4	50.5	28	33.5
DN32X20	135	53	60	65.5	18	15.8	19.1	25/50.5	28.5	31.8	50.5	28	38
DN40X20	178	60	82	76	26	15.8	19.1	25/50.5	34.8	38.1	50.5	28	48.5
DN50X20	180	53	60	88	26	15.8	19.1	25/50.5	47.5	50.8	64	28	60.5
DN65X20	226	53	60	111	31	15.8	19.1	25/50.5	59.5	63.5	77.5	28	83.5
DN25X25	148	60	82	61	24	22.1	25.4	50.5	22.1	25.4	50.5	28	33.5
DN32X25	157	60	82	65.5	25	22.1	25.4	50.5	28.5	31.8	50.5	28	38
DN40X25	178	60	82	76	26	22.1	25.4	50.5	34.8	38.1	50.5	28	48.5
DN50X25	202	60	82	88	34	22.1	25.4	50.5	47.5	50.8	64	28	60.5
DN65X25	248	60	82	111	42	22.1	25.4	50.5	59.5	63.5	77.5	28	83.5
DN32X32	157	60	82	65.5	25	28.5	31.8	50.5	28.5	31.8	50.5	28	38
DN40X32	178	60	82	76	28	28.5	31.8	50.5	34.8	38.1	50.5	28	48.5
DN50X32	202	60	82	88	31	28.5	31.8	50.5	47.5	50.8	64	28	60.5
DN40X40	206	72	110	76	31	34.8	38.1	50.5	34.8	38.1	50.5	28	48.5
DN50X40	230	72	110	88	34	34.8	38.1	50.5	47.5	50.8	64	28	60.5
DN65X40	276	72	110	111	42	34.8	38.1	50.5	59.5	63.5	50.5	28	83.5
DN50X50	250	85	130	88	34	47.5	50.8	64	47.5	50.8	64	28	60.5
DN65X50	296	85	130	111	42	47.5	50.8	64	59.5	63.5	77.5	28	83.5
DN80X80	391	125	185	131	82	80	89	106	80	89	106	28	103.5

Tank bottom diaphragm valve

The tank bottom valve is evolved on the basis of the diaphragm valve, and its sealing surface is as close as possible to the tank wall to avoid dead ends at the tank bottom. Pneumatic and manual actuators that share a diaphragm valve can also be combined with a feedback device.

Tank bottom valves are mainly used in the pharmaceutical, food and beverage industries, and are generally installed at the bottom of tanks for sampling and drainage. In addition, the valve can also be installed on the tank cover or tank wall.

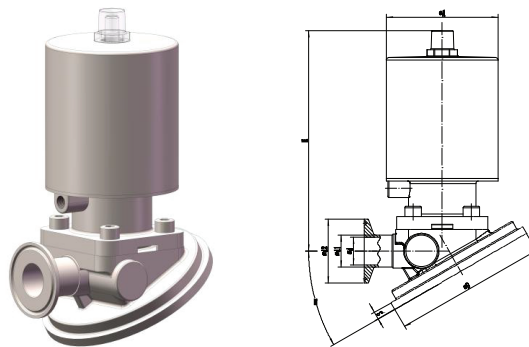
Manual tank bottom diaphragm valve



Model

Model	D	S	d	d1	d2	A	H	M
DN15	80	6	9.4	12.7	25	60	73	36°
DN20	80	6	15.8	19.1	25/50.5	60	73	36°
DN25	120	6	22.1	25.4	50.5	90	98	30°
DN40	148	12	34.8	38.1	50.5	114	115	36°
DN50	160	13	47.5	50.8	64	114	130	40°

Pneumatic tank bottom diaphragm valve



Model

Model	D	S	d	d1	d2	A	H	M	执行器 Actuator
DN15	80	6	9.4	12.7	25	57	127	36°	φ60
DN20	80	6	15.8	19.1	25/50.5	57	127	36°	φ60
DN25	120	6	22.1	25.4	50.5	88	158	30°	φ80
DN40	148	12	34.8	38.1	50.5	108	213	36°	φ100
DN50	160	13	47.5	50.8	64	108	228	40°	φ100



AE ANDERSON
EUROTECH
VALVES AND INSTRUMENTS

For Your Sales and After Sales, please contact:

Indonesia Sole Distributor

PT. Multi Sukses Pratama

Jl. Bandengan Utara No. 80
Rukan Bandengan Indah D No.20

Jakarta Utara, Indonesia

☎ (62) (21) 29379590, 29379591, 68292838, 8822918 (62)

☎ (21) 29379571

E-mail: sales@suksespratama.com