



## Products and Solutions

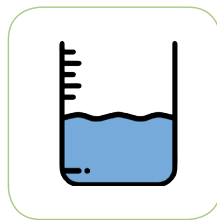
To Measure, Monitor and Control



Flow



Pressure



Level



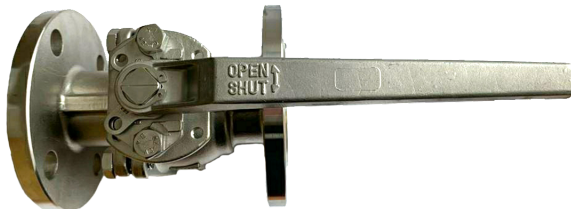
Temperature



Analytical

For The Process Industries

# AE BALL VALVE (Two Pcs Body Design, Lever Operated)



## 2 piece Flanged End Ball Valve PN 40

- High quality investment casting
- Full bore design
- Blow out proof stem
- Possible to mount to pneumatic or electric actuator
- Min. wall thickness design according to EN 12516-1
- Fire safe design: API 607
- Test Pressure: API598/EN 12266-1

Hydrostatic test:

1.4408- 59 bar

Seat(air) test: 80 PSI (6 Bar) under water

Seat(water) test: 44 bar

## Specifications

Orifice

DN 50 to DN 150

### Material

Body

DIN 1.4308 (CF8), IN 1.4408 (CF8M), DIN 1.0619 (WCB)

End Cap

DIN 1.4308 (CF8), IN 1.4408 (CF8M), DIN 1.0619 (WCB)

Stem material

304SS, 316SS

Ball

1.4038, 1.4408

### Seal Material

Main Seal

PTFE or RPTFE

Body Seal

PTFE or RPTFE

Stem Seal

PTFE/RPTFE with FKM O-ring

Option

MG 1241, PPL (Steam), TFM4215, TFM 1600, PEEK

### Handle Material

SUS304/Carbon steel

### Media

Gaseous and liquids that is compatible with the selected material

### Media Temperature

-10°C to +180°C (PTFE Seat)

-10°C to +200°C (MG 1241 Seat)

### End Connections

Flange End

### Pressure Rating

EN PN40, 2" to 4"

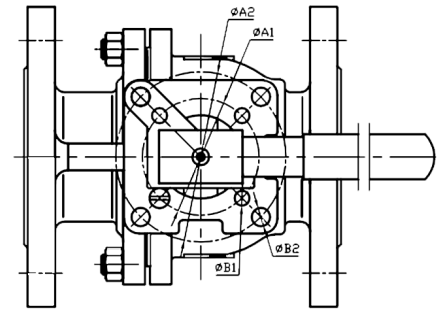
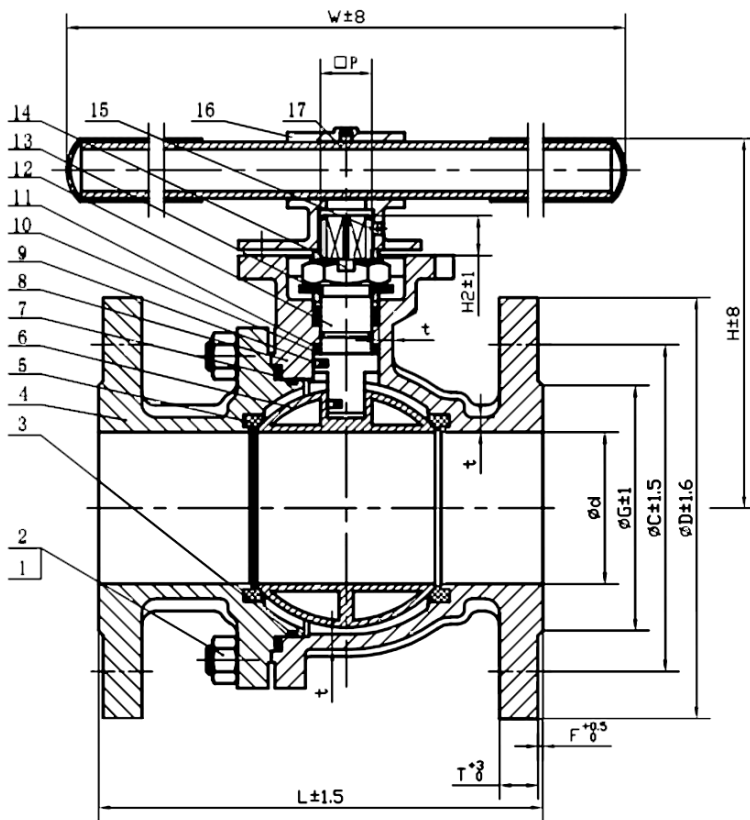
### Options

Degreased, Anti static, V-port ball, Lever with locking device

### Installation

If required

# AE BALL VALVE (Two Pcs Body Design, Lever Operated)



## Dimensions

SIZE	d	D	C	G	T	F	L	t	□P	W	H	H1	H2	ØA1	ØA2	ØB1	ØB2	M-N	ISO 5211
2 1/2	65	180	139.7	104.8	15.9	2	190	5.8	17	300	158	108	17	70	102	9	11	4-19	F07/F10
3	78	190	152.4	127	17.5	2	230	6.1	17	300	166.5	116.5	17	70	102	9	11	4-19	F07/F10
4	100	230	190.5	157.2	22.3	2	229	6.5	19	350	190	140	19	70	102	9	11	8-19	F07/F10
5	125	255	215.9	186	22.3	2	356	6.8	27	650	278.5	195	27		125		13	8-22.3	F12
6	150	280	241.3	215.9	23.9	2	294	7.1	27	650	299.5	216	27		125		13	8-22.3	F12

## Standard Materials

No.	Parts Name	Material	No.	Parts Name	Material
1	Hex bolts	A193 B8	13	Butterfly Spring	304
2	Nut	A194 8	14	Thrust Washer	304
3	O-Ring	FKM	15	Screw	304
4	Bonnet	CF8	16	Sleeve	CF8
5	Seat	PPL	17	Steel Pipe	304
6	Ball	316	18	Stop Pin	304
7	Gasket	Graphite te+316	19	Stem Nut	304
8	Body	CF8	20	Packing Gland	304
9	Anti-static device	316	21	Packing	PTFE+25%GF
10	Stem Gasket	PTFE+25%GF	22	Packing	Graphite
11	Stem Gasket	Graphite	23	O-Ring	FKM
12	Stem	316	24		

# AE BALL VALVE (Three Pcs Body Design, Lever Operated)



## Design

AE BLV323 Series full port ball valve has a three pieces valve body construction for easy installation and maintenance. It is designed for a wide range of application and media in the process industry. The quarter turn operation for opening or closing of the valve is done by a hand lever. The valve body is made from high quality stainless steel using precision investment cast technology. Safety features include blow out proof stem and lever with locking device.

The AE BLV323 stem seal is constantly loaded by a set of disc spring to eliminate premature stem leakage and has integrated top flange in accordance to ISO5211 that allows easy mounting of actuators and limit switch box.

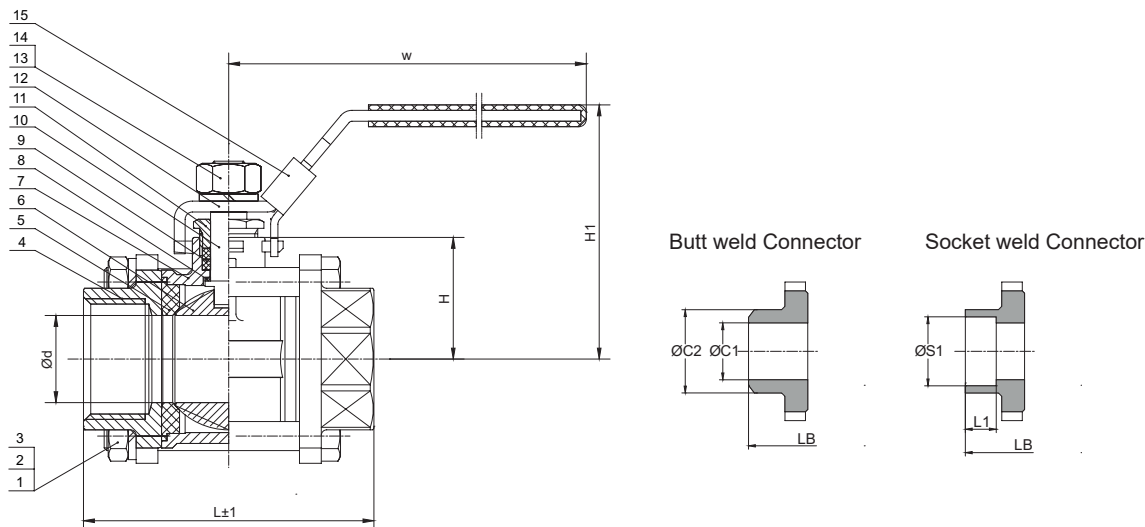
The AE BLV323N, without ISO top flange, is meant as a cost effective solution for application where manual operation is needed only.

<b>Type</b>	BLV323N
<b>Design</b>	Full Port 3 pcs body according to ANSI B16.34
<b>Face to Face Dimension</b>	Complied to DIN3202-M3
<b>Inspection and Test</b>	According to API598
<b>Size</b>	DN10 to DN98 (1/2" to 4")
<b>Material</b>	
Body	CF8M
End Cap	CF8M
Ball	SS316
Stem	SS316
	(other material on request)
<b>Seal Material</b>	
Main Seat	PTFE
Body Seal	PTFE
Stem Seal	PTFE
	(other material on request)
<b>Port Connection</b>	Standard NPT (PT, BSP, Buttweld, Socketweld on request)
<b>Media</b>	Water, Oil, Gas, Acid and other media that is compatible to the body and seat/ seal material
<b>Media Temperature</b>	-10°C to +120°C (PTFE Seal)
<b>Pressure Rating</b>	0 to 63 bar (1/4" to 2") 0 to 40 bar (2 1/2" to 4")
<b>Operator</b>	Lever with locking device
<b>Option</b>	Degreased, Anti-Static
<b>Installation</b>	As required

<b>Type</b>	BLV323
<b>Design</b>	Full Port 3 pcs body according to ANSI B16.34
<b>Face to Face Dimension</b>	Complied to DIN3202-M3
<b>Inspection and Test</b>	According to API598
<b>Size</b>	DN12 to DN98 (1/2" to 4")
<b>Material</b>	
Body	CF8M
End Cap	CF8M
Ball	SS316
Stem	SS316
	(other material on request)
<b>Seal Material</b>	
Main Seat	PTFE or PPL*
Body Seal	PTFE or PPL*
Stem Seal	PTFE/Viton or PPL*
	(other material on request)
	*PPL (Polyparaphenylene) is an excellent seat material with low coefficient of friction, highly resistant to pressure and temperature and is recommended for steam application
<b>Port Connection</b>	Standard BSP (PT, NPT, Buttweld, Socketweld on request)
<b>Media</b>	Water, Oil, Gas, Acid, Steam (with PPL seat) and other media that is compatible to the body and seat/seal material
<b>Media Temperature</b>	-10°C to +120°C (PTFE Seat) -10°C to + 200°C (PPL Seat) Up to 10 bar steam (PPL Seat)
<b>Pressure Rating</b>	0 to 63 bar (1/4" to 2") 0 to 40 bar (2 1/2" to 4")
<b>Operator</b>	Lever with locking device
<b>Option</b>	Degreased, Anti-Static
<b>Installation</b>	As required
<b>Automation</b>	Integrated direct mounting top flange in accordance to ISO5211

# AE BALL VALVE (Three Pcs Body Design, Lever Operated)

## Materials and Dimensions



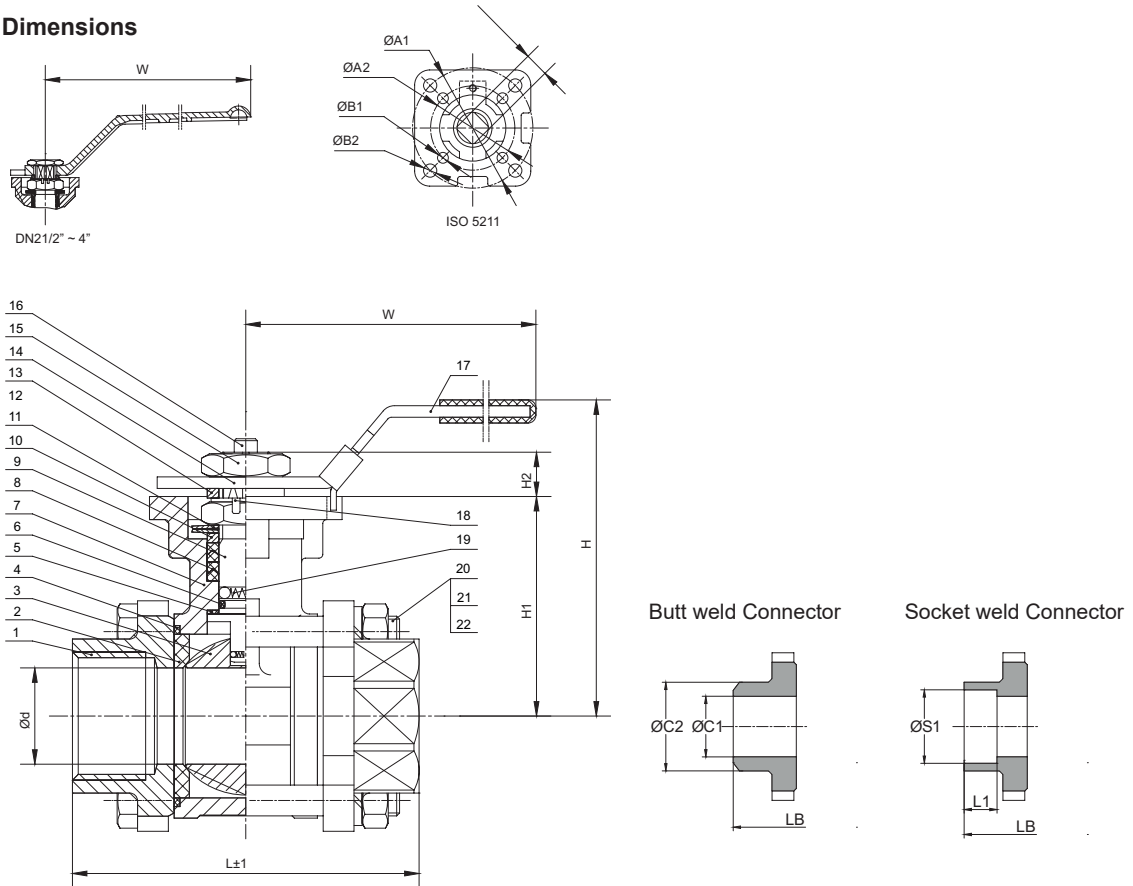
No.	Part	Material	No.	Part	Material
1	Bolt	ASTM A193-B8	9	Packing	PTFE
2	Spring Washer	ASTM A193-B8	10	Stem	ASTM A276 316
3	Nut	ASTM A194-B8M	11	Packing Gland	ASTM A276 304
4	End Cap	ASTM A351 CF8M	12	Handle	ASTM A276 201
5	Seat	PTFE	13	Spring Washer	ASTM A193-B8
6	Ball	ASTM A276 316	14	Handle Nut	ASTM A194-B8M
7	Body	ASTM A351 CF8M	15	Handle Lock	ASTM A276 201
8	Stem Gasket	PTFE			

Size	Ød	L	H	H1	W	ØC1	ØC2	LB	ØS1	L1	Weight (kg)
1/4	10	50	20.5	51.5	96	12.5	18	70	14.2	10	0.25
3/8	10	60	20.5	51.5	96	12.5	18	70	17.8	10	0.25
1/2	15	75	26	59	98	16	22.5	75	21.8	10	0.42
3/4	20	80	30.5	67	120	21	27	90	27.3	13	0.61
1	25	90	33.5	67.5	120	26	34.5	100	34	13	0.78
1 1/4	32	110	41.5	80.5	150	32	43	110	42.8	16	1.25
1 1/2	38	120	51	95	170	40	49	125	48.9	16	1.86
2	47	140	58	102	170	51	62	150	61.4	17	2.58
2 1/2	64	185	72.5	125	250	65	76.5	190	74	17	4.98
3	76	205	83	135.5	250	80	92	220	90	17	7.5
4	98	240	105	165.5	300	100	115.5	270	115.4	20	12.9

# AE BALL VALVE

## (Three Pcs Body Design, Lever Operated)

### Materials and Dimensions



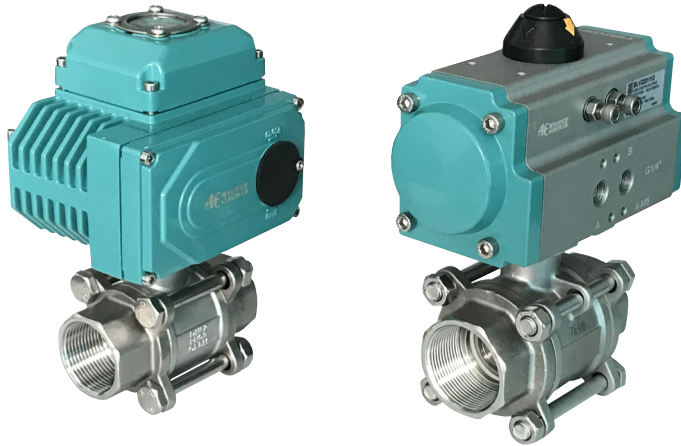
No.	Part	Material	No.	Part	Material
1	Bonnet	ASTM A351 CF8M	12	Stem Nut	ASTM A276 304
2	Seat	PTFE	13	Packing Gland	ASTM A276 304
3	Ball	ASTM A276 316	14	Handle	ASTM A276 304
4	Gasket	PTFE	15	Nut	ASTM A276 304
5	Stem Gasket	PTFE	16	Stop Pin	ASTM A276 304
6	O-Ring	Viton	17	Handle Lock	ASTM A276 304
7	Body	ASTM A351 CF8M	18	Thrust Washer	ASTM A276 304
8	Packing	PTFE	19	Anti-Static-Device <sup>1)</sup>	ASTM A276 304
9	Stem	ASTM A276 316	20	Bolt	ASTM A276 304
10	Packing Gland	ASTM A276 304	21	Spring Washer	ASTM A276 304
11	Disc Spring	PH15-7Mo	22	Nut	ASTM A276 304

<sup>1)</sup> Option

Size	Ød	L	H	H1	H2	□E	W	ØA1	ØA2	ØB1	ØB2	ISO5211	ØC1	ØC2	LB	ØS1	L1	Weight (kg)
1/4	12	60	58	31	7.5	9	110	42	36	6	6	F03/F04	12.5	18	70	14.2	10	0.45
3/8	12	60	58	31	7.5	9	110	42	36	6	6	F03/F04	12.5	18	70	17.8	10	0.45
1/2	15	75	67	40	8	9	110	42	36	6	6	F03/F04	16	22.5	75	21.8	10	0.7
3/4	20	80	71	44	8	9	110	42	36	6	6	F03/F04	21	27	90	27.3	13	0.9
1	25	90	86	55	10	11	160	50	42	6	7	F04/F05	26	34.5	100	34	13	1.3
1 1/4	32	110	91.5	60.5	10	11	160	50	42	6	7	F04/F05	32	43	110	42.8	16	2
1 1/2	38	120	105.5	68.5	14	14	185	70	50	7	9	F05/F07	38	49	125	48.9	16	2.5
2	47	140	112.5	75.5	14	14	185	70	50	7	9	F05/F07	51	62	150	61.4	17	3.6
2 1/2	64	185	165	96	16	17	305	102	70	9	11	F07/F10	65	76.5	190	74	17	7.75
3	76	205	175	106.5	16	17	305	102	70	9	11	F07/F10	78	92	220	90	17	11.3
4	98	240	198	130	18	19	305	102	70	9	11	F07/F10	100	115.5	270	115.4	20	19.2

The specifications given in this document represent the state of engineering at the time of publishing. We reserve the right to make modifications to the specifications and materials.

# AE BALL VALVE (Three Pcs Body Design, Pneumatic and Electric Operated)



## Design

AE BLV323 ball valve when retrofitted with pneumatic or electric actuator make it suitable for automatic process control application.

Pneumatic actuator is available in double acting (DA) or spring return (SR) version. Wide range of accessories including E/P positioner, limit switch box for position feedback, declutchable manual override gearbox and pilot solenoid valves complete the range to meet various application requirements.

Electric actuator is available in on/off or modulating control version and comes standard with manual override built in.

The actuator can be mounted onto the valve directly or using mounting bracket in either normally open or normally closed position. Every valve is fully tested for alignment and proper functioning before delivery.

## Specifications - Pneumatic Actuator

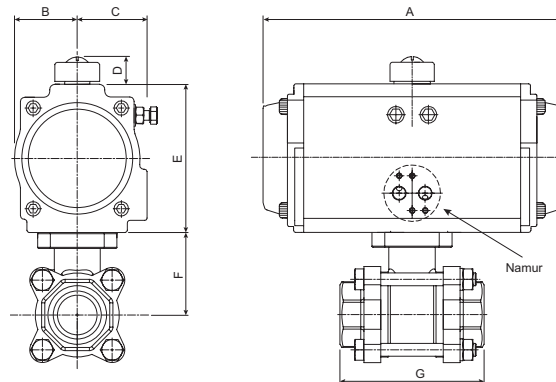
Function	Double Acting (DA) or Spring Return (SR)
Material	
Housing	Extruded aluminum alloy, hard anodized
End Cap	Pressure die cast aluminum alloy, epoxy coated
Pinion	Carbon steel, nickel plated
Piston	Cast aluminum / steel, hard anodized / Zinc galvanized
Cap Screw	Stainless steel
Spring	Spring steel, Dip Coated
Bearing and Guide	Engineering plastic
Travel Stop Cam	Alloy steel
Adjustment Screw	Stainless steel
Seal	NBR
Mounting Bracket	Aluminum, stainless steel, alloy steel
Operating Media	Dry or lubricated compressed air or non-corrosive gases
Supply Pressure	Min. 2 bar, Max. 8 bar
Operating Temperature	-20°C to +80°C (NBR) Lower or higher temperature version on request
Rotation	90°
Travel Adjustment	± 5°
Connection and Mounting	Namur, ISO5211 and DIN3337
Torque Output	3 Nm to 13024 Nm (DA) 4 Nm to 6584 Nm (SR)
Selection	Actuator is selected and matched in accordance to each process operating conditions and requirement to ensure proper functioning of the actuated valve

## Specifications - Electric Actuator

Function	On/Off or Modulating
Material	
Housing	Aluminum alloy, epoxy powder coated
Gear	Steel / aluminum bronze
Screws	Stainless steel
Indicator Cover	Polycarbonate
Shaft / Adaptor	Alloy steel
Seal	NBR
Power Supply	24VDC, 110VAC, 220VAC
Motor	Squirrel cage asynchronous motor
Limit Switch	SPDT, 250VAC10A, each for Open/Close position
Rotation	90° (± 10°) other rotation on request
Stall protection	Internal overheating protection, open @ 120°C / close @ 97°C (± 5°C)
Manual Operation	Mechanical handle standard
Space Heater	7 ... 10W (110/220VAC)
Conduit Entry	2 x M18
Operating Temperature	-20°C to +70°C
Ambient Humidity	Max. 90% RH
Mounting	ISO5211
Torque Output	30 Nm to 1000 Nm (2000 Nm on request)
Selection	Actuator is selected and matched in accordance to each process operating conditions and requirement to ensure proper functioning of the actuated valve
Options	
	Position Feedback Potentiometer (1K ... 10K)
	Position Feedback Sensor with Current output (4 ... 20mA)
	Proportional Control Unit for modulating control (input/output signal, 4 ... 20mA, 1 ... 5 VDC, 1 ... 10VDC)
	Power Failure Sell Reset
	Quick Opening Version

# AE BALL VALVE (Three Pcs Body Design, Pneumatic Operated)

## Pneumatic Actuated Version



## Pneumatic Actuated Version Common Selection and Dimension (mm)

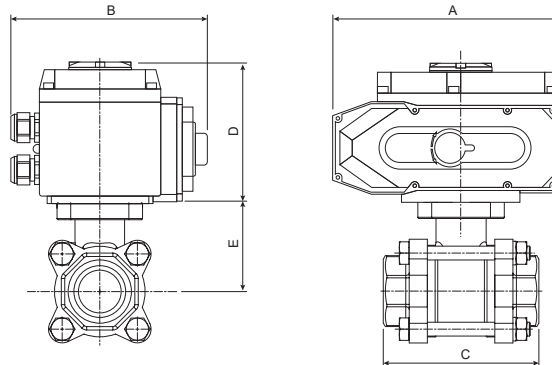
Function	Size	Pressure Range <sup>1)</sup> (bar)	Actuator @ pilot air of:		Dimensions							Weight (kg)
			5 bar	6 bar	A	B	C	D	E	F	G	
DA	1/2"	0 to 10	AEJAT032DA		112	23.5	23.5	26	45	40	75	1.5
	3/4"	0 to 10	AEJAT040DA		123	23.5	33	26	60	44	80	1.8
	1"	0 to 10	AEJAT052DA		145	30	41	26	72	55	90	2.7
	1 1/4"	0 to 10	AEJAT063DA		169	46	46	26	89	60.5	110	4.1
	1 1/2"	0 to 10	AEJAT075DA		201	42	52	26	100	68.5	120	5.5
				AEJAT063DA	169	46	46	26	89			4.6
	2"	0 to 10	AEJAT075DA		201	42	52	26	100	75.5	140	6.6
	2 1/2"	0 to 10	AEJAT092DA		242	51	57.5	26	117	96	185	12.6
	3"	0 to 10	AEJAT105DA		275	58	64	26	134	106.5	205	17.6
				AEJAT092DA	242	51	57.5	26	117			16.1
4"	0 to 10	AEJAT125DA		332	67.5	70	36	157	130	240	28.9	
			AEJAT105DA	275	58	64	26	134			25.3	
SR	1/2"	0 to 10	AEJAT052SR		145	30	41	26	72	40	75	2.2
	3/4"	0 to 10	AEJAT052SR		145	30	41	26	72	44	80	2.4
	1"	0 to 10	AEJAT075SR		201	42	52	26	100	55	90	4.6
				AEJAT063SR	169	46	46	26	89			3.6
	1 1/4"	0 to 10	AEJAT083SR		209	46	55	26	109	60.5	110	5.9
	1 1/2"	0 to 10	AEJAT092SR		242	51	57.5	26	117	68.5	120	7.9
				AEJAT083SR	209	46	55	26	109			6.4
	2"	0 to 10	AEJAT092SR		242	51	57.5	26	117	75.5	140	9.0
	2 1/2"	0 to 10	AEJAT125SR		332	67.5	70	36	157	96	185	18.9
				AEJAT105SR	275	58	64	26	134			15.1
	3"	0 to 10	AEJAT140SR		400	76	77	36	174	106.5	205	27.2
				AEJAT125SR	332	67.5	70	36	157			22.4
	4"	0 to 10	AEJAT160SR		455	87.5	87.5	38	199	130	240	43.0
				AEJAT140SR	400	76	77	36	174			35.1

<sup>1)</sup> Actuator selection serve as a guide and is based on clean lubricating operating media at pressure up to 10 bar. For other operating conditions, please consult us.

<sup>2)</sup> For Steam or high temperature application, a bracket of height min. 75mm will be used for assembly of actuator to ball valve.

# AE BALL VALVE (Three Pcs Body Design, Electric Operated)

## Electric Actuated Version



## Electric Actuated Version Common Selection and Dimension (mm)

Function	Size (mm)	Pressure Range <sup>1)</sup> (bar)	Actuator	Dimensions					Weight (kg)
				A	B	C	D	E	
Bi-Stable	1/2"	0 to 10	AEJMO-003	123	100	75	115	40	2.3
	3/4"	0 to 10	AEJMO-003	123	100	80	115	44	3.2
	1"	0 to 10	AEJMO-003	123	100	90	115	55	3.6
	1 1/4"	0 to 10	AEJMO-003	123	100	110	115	60.5	4.3
	1 1/2"	0 to 10	AEJMO-005	161	121	120	125	68.5	6.2
	2"	0 to 10	AEJMO-005	161	121	140	125	75.5	7.3
	2 1/2"	0 to 10	AEJMO-010	188	145	185	127	96	13.0
	3"	0 to 10	AEJMO-015	188	145	205	127	106.5	16.5
4"	0 to 10	AEJMO-020	268	255	240	164	130	31.4	

<sup>1)</sup> Actuator selection serve as a guide and is based on clean lubricating operating media at pressure up to 10 bar. For other operating conditions, please consult us.

<sup>2)</sup> For Steam or high temperature application, a bracket of height min. 75mm will be used for assembly of actuator to ball valve.

## Accessories for Pneumatic Actuated Valve



## Other AE BLV Series Ball Valves



# AE BALL VALVE (Three Pcs Body Design, V-Port)



## Design

AE BLV323V Series full port ball valve has a three pieces valve body construction for easy installation and maintenance. It has a ball with 30° V-Shape precisely cut port offering a modified equal percentage flow characteristic. It is designed for a wide range of application and media in the process industry where modulating control is required.

The quarter turn operation for opening or closing of the valve is by hand lever, pneumatic actuator or electric actuator. The valve body is made from high quality stainless steel using precision investment cast technology. Safety features include blow out proof stem and lever with locking device.

The stem seal is constantly loaded by a set of disc spring to eliminate premature stem leakage and has integrated top flange in accordance to ISO5211 that allows easy mounting of actuator and limit switch box.

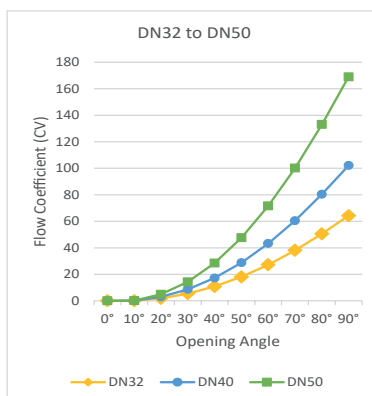
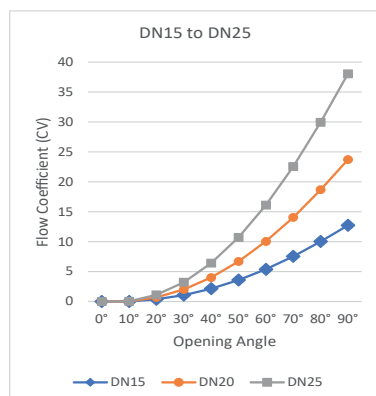
## Specifications

<b>Type</b>	BLV323V
<b>Design</b>	Full Port 3 pcs body according to ANSI B16.34
<b>Inspection and Test</b>	According to API598
<b>Size</b>	DN15 to DN50 (1/2" to 2") (Bigger sizes on request)
<b>Material</b>	
Body	CF8M
End Cap	CF8M
Ball	SS316
Stem	SS316 (other material on request)
<b>Seal Material</b>	
Main Seat	PTFE or RPTFE
Body Seal	PTFE or RPTFE
Stem Seal	PTFE or RPTFE with FKM O-ring (MG 1241 (Steam), TFM 4215, TFM 1600, PEEK on request)

<b>End Connections</b>	Standard BSP (PT, NPT, Buttweld, Socketweld on request)
<b>Media</b>	Water, Oil, Gas, Mild Acid, Steam (with MG 1241 seat) and other media that is compatible to the body and seat/seal material
<b>Media Temperature</b>	-10°C to +120°C (PTFE Seat) -10°C to + 200°C (MG 1241 Seat) Up to 10 bar steam (MG 1241 Seat)
<b>Pressure Rating</b>	0 to 63 bar (1/4" to 2") 0 to 40 bar (2 1/2" to 4")
<b>Operator</b>	Lever with locking device
<b>Option</b>	Degreased, Anti-Static
<b>Installation</b>	As required
<b>Automation</b>	Integrated direct mounting top flange in accordance to ISO5211

## Flow Coefficient (CV) - 30° V-Port

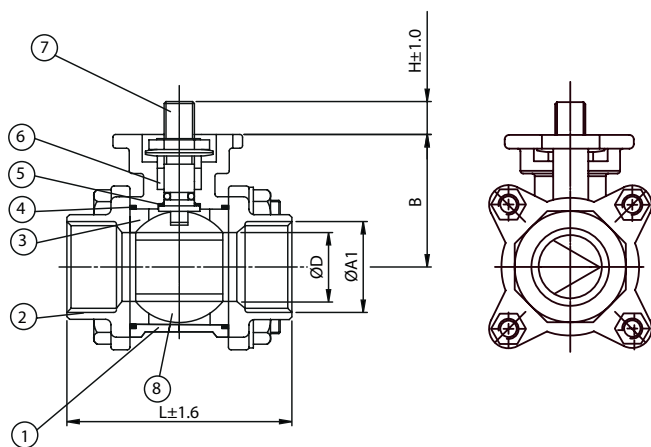
Size / Opening	0°	10°	20°	30°	40°	50°	60°	70°	80°	90°
DN15	0	0.01	0.37	1.07	2.14	3.58	5.38	7.53	10.02	12.72
DN20	0	0.02	0.69	2	3.99	6.67	10.03	14.04	18.66	23.69
DN25	0	0.03	1.11	3.21	6.4	10.7	16.09	22.53	29.94	38.02
DN32	0	0.05	1.88	5.44	10.82	18.08	27.19	38.08	50.6	64.26
DN40	0	0.09	3	8.64	17.2	28.74	43.22	60.51	80.42	102.12
DN50	0	0.15	4.96	14.31	28.48	47.58	71.54	100.17	133.12	169.03



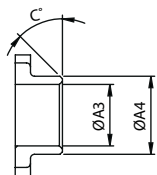
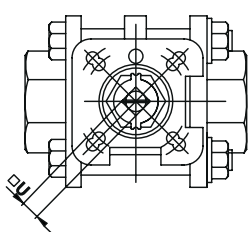
V-Port 15°, 60°, 90° available on request

# AE BALL VALVE (Three Pcs Body Design, V-Port)

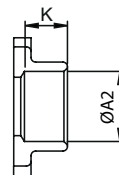
## Materials and Dimensions



No.	Part	Material
1	Bolt	CF8M
2	End Cap	CF8M
3	Seat	PTFE or RPTFE
4	Body Gasket	PTFE
5	Thrust Washer	PTFE
6	Stem Packing	PTFE
7	Stem	SS316
8	Ball	SS316



Butt weld Connector



Socket weld Connector

Size	ØD	L	H	□U	ISO 5211	ØA1	ØA2	K	ØA3	ØA4	B	Weight (kg)
1/2	15	75	8.6	9	F03/F04	G1/2	21.71	12.7	15.9	22	40.5	0.65
3/4	20	80	9.6	9	F03/F04	G3/4	27.05	14.3	20.6	28	50.5	0.89
1	25.4	90	12.5	11	F04/F05	G1	33.78	15.9	25	35	56.5	1.23
1 1/4	31.8	110	12.6	11	F04/F05	G1 1/4	42.54	17.5	32	44	60	1.92
1 1/2	38.1	120	16.1	14	F05/F07	G1 1/2	48.64	19.1	40	50	77	2.96
2	50.8	140	16.8	14	F05/F07	G2	61.11	22.2	50.8	62	84	4.71



**AE** ANDERSON  
EUROTECH  
VALVES AND INSTRUMENTS

For Your Sales and After Sales, please contact:

Indonesia Sole Distributor

**PT. Multi Sukses Pratama**

Jl. Bandengan Utara No. 80  
Rukan Bandengan Indah D No.20

Jakarta Utara, Indonesia

☎ (62) (21) 29379590, 29379591, 68292838, 8822918 (62)

☎ (21) 29379571

E-mail: [sales@suksespratama.com](mailto:sales@suksespratama.com)