



Products and Solutions

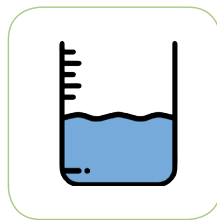
To Measure, Monitor and Control



Flow



Pressure



Level



Temperature



Analytical

For The Process Industries

Resilient-Seated Gate Valve

Non-Rising Stem, brass nut type

The **Resilient Seated Gate Valve**, which is designed and manufactured for use in water, waste water, and sewage. Main usage is for isolation purposes. Full bore design makes it possible to be used bi-directionally and the fluid could clean the sealing surface area every time the valve is opened.



Main Features

- Huge convenience in daily water-using and repairing
If sealing parts in the bonnet are broken, we could replace the sealing parts with the valve completely open when the valve is still in the pipeline.
- Class A sealing (ZERO LEAKAGE)
- 100% testing before packing and delivery.
- Completely free and full bore self-cleaning & low-pressure loss.
- Operation: Manual handwheel, Square Cap, Extension Spindle.
- Bonnet bolts are in Galvanized Carbon Steel, and sealed with hot melt to prevent corrosion. Other materials upon request.
- O-ring bonnet gasket wraps each bolt to prevent corrosion.
- Linear sealing design provides better sealing & lower closing torque.
- Potable water approved epoxy coating, fusion bonded according DIN 3476-1, EN 14901



Standards

- Hydraulic tests according to EN-12266-1, Class A
- Designed to EN-1074
- Flanges to EN-1092-2, BS4504

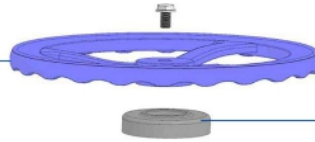
Service Fields

- Water and neutral liquid applications
- Main transmission pipelines
- Irrigation system
- Fire fighting

Resilient-Seated Gate Valve

Non-Rising Stem

Handwheel / Cap
 Ductile iron
 EN-GJS-500-7



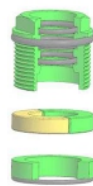
Dust Cover
 NBR rubber



Stem
 Stainless steel AISI 420
 * SS304
 * SS316 / SS316
 * 2CR13
 - smooth surface
 - high torque resistance

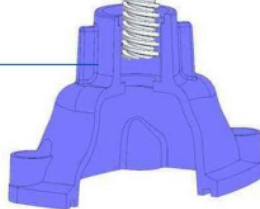


Stem Nut
Locking Rings
Thrust Washer
 BRASS CuZn39Pb1
 * Aliminimum Bronze
 * Dezincfication Brass CZ132



- total 6 O-Rings in bonnet
 - upper 3 O-Rings replaceable under pressure

Bonnet
 Ductile iron
 EN-GJS-500-7
 with gasket groove

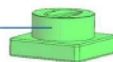


Bonnet Gasket
 EPDM / NBR rubber
 - cambered surface
 - bolts wrapped separately
 make sure good sealing

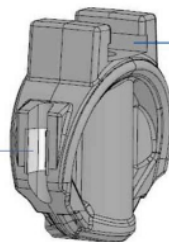


Bolts
 Carbon steel Galvanized 8.8 grade
 * SS304
 * SS316 / SS316L
 - sealed with hot melt
 to prevent corrosion

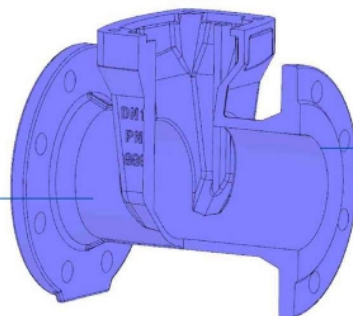
Wedge Nut
 BRASS CuZn39Pb1
 * Aliminimum Bronze
 * Dezincfication Brass CZ132
 Free wedge nut design
 - reduces stem bending forces
 - can be easily replaced



Rubber Wedge
 Ductile iron EN-GJS500-7
 + EPDM / NBR rubber
 - Wedge fully encapsulated in
 EPDM for a better resistance to
 corrosion.
 - Linear sealing design
 provides better sealing & lower
 closing torque.



Wedge Guide Shoe
 - get lower operating torque
 and longer service life



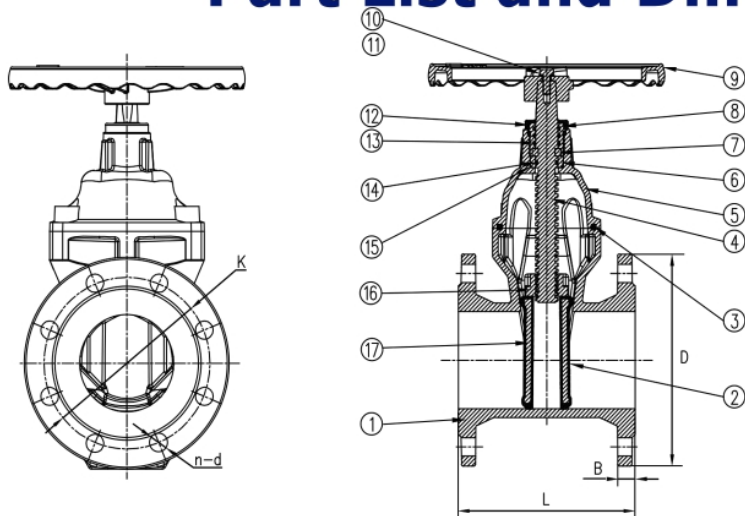
Surface Protection
 Fusion bonded epoxy coating
 internally & externally
 average thickness 300 micron
 - WRAS approved epoxy powder

Body
 Ductile iron EN-GJS500-7
 Completely free and full bore
 self-cleaning & low-pressure loss.

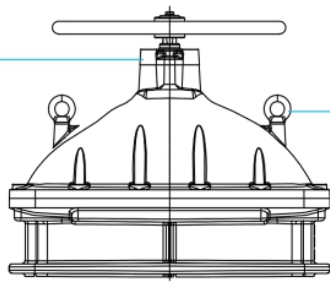
100% tested acc. to EN 12166-1 standard.

AE GATE VALVE

Part List and Dimensions



* size above DN300
with gland on bonnet



* lifting ring
from size DN200

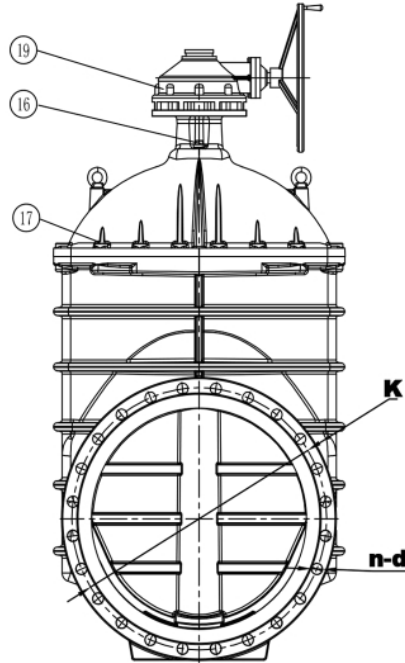
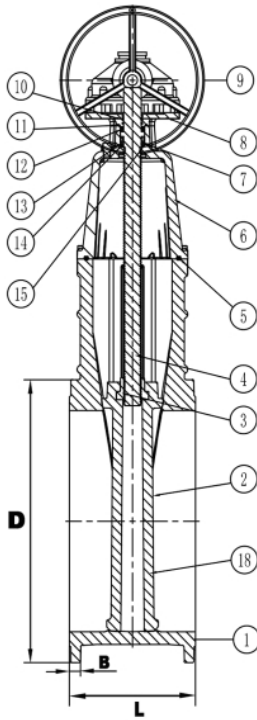
17	Core	DUCTILE IRON
16	Stem Nut	CuZn39Pb1 Brass
15	O Ring	NBR
14	O Ring	NBR
13	O Ring	NBR
12	Dustcover	NBR
11	Flat washer	AISI304 STAINLESS STEEL
10	Bolt	AISI304 STAINLESS STEEL
9	Handwheel/Cap	DUCTILE IRON
8	Thrust Nut	CuZn39Pb1 Brass
7	Holding Ring	CuZn39Pb1 Brass
6	Thrust Washer	CuZn39Pb1 Brass
5	Bonnet	DUCTILE IRON
4	Stem	2Cr13
3	Bonnet Gasket	NBR
2	Disc	EPDM+DUCTILE IRON
1	Body	DUCTILE IRON

SIZE	Outline (mm)			Valve Flange dimensions (mm)			
	L (face to face)			EN1092-2, PN10 / PN 16 / PN25			
DN	BS5163	DIN-F4	DIN-F5	D	K	n-d	B
DN40	165	140	240	150	110	4-φ19	19
DN50	178	150	250	165	125	4-φ19	19
DN65	190	170	270	185	145	4-φ19 / 4-φ19 / 8-φ19	19
DN80	203	180	280	200	160	8-φ19 / 8-φ19 / 8-φ19	19
DN100	229	190	300	220 / 220 / 235	180 / 180 / 190	8-φ19 / 8-φ19 / 8-φ23	19
DN125	254	200	325	250 / 250 / 270	210 / 210 / 220	8-φ19 / 8-φ19 / 8-φ28	19
DN150	267	210	350	285 / 285 / 300	240 / 240 / 250	8-φ23 / 8-φ23 / 8-φ28	19 / 19 / 20
DN200	292	230	400	340 / 340 / 360	295 / 295 / 310	8-φ23 / 12-φ23 / 12-φ28	20 / 20 / 22
DN250	330	250	450	405 / 405 / 425	350 / 355 / 370	12-φ23 / 12-φ28 / 12-φ31	22 / 22 / 24.5
DN300	356	270	500	460 / 460 / 485	400 / 410 / 430	12-φ23 / 12-φ28 / 16-φ31	24.5 / 24.5 / 27.5
DN350	381	290	550	520 / 520 / 555	460 / 470 / 490	16-φ23 / 16-φ28 / 16-φ34	26.5 / 26.5 / 32
DN400	406	310	600	580 / 580 / 620	515 / 525 / 550	16-φ28 / 16-φ31 / 16-φ37	28 / 28 / 32
DN450	432	330	650	640 / 640	565 / 585	20-φ28 / 20-φ31	30 / 30
DN500	457	350	700	670 / 715	620 / 650	20-φ28 / 20-φ34	26.5 / 31.5
DN600	508	390	800	780 / 840	725 / 770	20-φ31 / 20-φ37	30 / 36
DN700	610	430	900	895 / 910	840 / 840	24-φ31 / 24-φ37	32.5 / 39.5
DN800	660	470	1000	1015 / 1025	950 / 950	24-φ34 / 24-φ41	35 / 43
DN900	711	510	1100	1125 / 1125	1050 / 1050	28-φ34 / 28-φ40	46.5 / 46.5
DN1000	811	550	1200	1255 / 1255	1160 / 1170	28-φ37 / 28-φ43	50 / 50
DN1200	960	630	1400	1485 / 1485	1380 / 1390	32-φ40 / 32-φ49	57 / 57

Designs, materials and specifications shown are subject to change without notice due to our continuing program of product development.

* PN25 available for sizes DN40-400

Resilient-Seated Gate Valve Non-Rising Stem, operated with Gearbox



19	Gearbox	Assembly unit
18	Disc core	DUCTILE IRON
17	Bonnet Bolt	CARBON STEEL GALVANIZED
16	Plug	AISI304 STAINLESS STEEL
15	O Ring	NBR
14	O Ring	NBR
13	O Ring	NBR
12	Bearing	AISI304 STAINLESS STEEL
11	O Ring	NBR
10	O Ring	NBR
9	Bevel Gear	assembly set
8	Top flange	DUCTILE IRON
7	Thrust Washer	CuZn39Pb1 Brass
6	Bonnet	DUCTILE IRON
5	Bonnet Gasket	NBR
4	Stem	AISI420 STAINLESS STEEL
3	Stem Nut	CuZn39Pb1 Brass
2	Disc	EPDM+DUCTILE IRON
1	Body	DUCTILE IRON

pls contact us for more details for the gearbox


SIZE	Outline (mm)			Valve Flange dimensions (mm)			
	L (face to face)			EN1092-2, PN10 / PN 16 / PN25			
DN	BS5163	DIN-F4	DIN-F5	D	K	n-d	B
DN40	165	140	240	150	110	4-φ19	19
DN50	178	150	250	165	125	4-φ19	19
DN65	190	170	270	185	145	4-φ19 / 4-φ19 / 8-φ19	19
DN80	203	180	280	200	160	8-φ19 / 8-φ19 / 8-φ19	19
DN100	229	190	300	220 / 220 / 235	180 / 180 / 190	8-φ19 / 8-φ19 / 8-φ23	19
DN125	254	200	325	250 / 250 / 270	210 / 210 / 220	8-φ19 / 8-φ19 / 8-φ28	19
DN150	267	210	350	285 / 285 / 300	240 / 240 / 250	8-φ23 / 8-φ23 / 8-φ28	19 / 19 / 20
DN200	292	230	400	340 / 340 / 360	295 / 295 / 310	8-φ23 / 12-φ23 / 12-φ28	20 / 20 / 22
DN250	330	250	450	405 / 405 / 425	350 / 355 / 370	12-φ23 / 12-φ28 / 12-φ31	22 / 22 / 24.5
DN300	356	270	500	460 / 460 / 485	400 / 410 / 430	12-φ23 / 12-φ28 / 16-φ31	24.5 / 24.5 / 27.5
DN350	381	290	550	520 / 520 / 555	460 / 470 / 490	16-φ23 / 16-φ28 / 16-φ34	26.5 / 26.5 / 32
DN400	406	310	600	580 / 580 / 620	515 / 525 / 550	16-φ28 / 16-φ31 / 16-φ37	28 / 28 / 32
DN450	432	330	650	640 / 640	565 / 585	20-φ28 / 20-φ31	30 / 30
DN500	457	350	700	670 / 715	620 / 650	20-φ28 / 20-φ34	26.5 / 31.5
DN600	508	390	800	780 / 840	725 / 770	20-φ31 / 20-φ37	30 / 36
DN700	610	430	900	895 / 910	840 / 840	24-φ31 / 24-φ37	32.5 / 39.5
DN800	660	470	1000	1015 / 1025	950 / 950	24-φ34 / 24-φ41	35 / 43
DN900	711	510	1100	1125 / 1125	1050 / 1050	28-φ34 / 28-φ40	46.5 / 46.5
DN1000	811	550	1200	1255 / 1255	1160 / 1170	28-φ37 / 28-φ43	50 / 50
DN1200	960	630	1400	1485 / 1485	1380 / 1390	32-φ40 / 32-φ49	57 / 57

* PN25 available for sizes DN40-400

AE GATE VALVE

Resilient-Seated Gate Valve

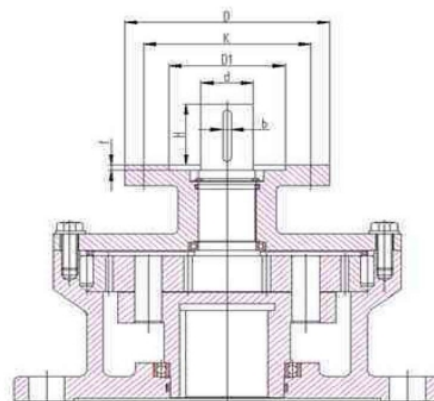
Non-Rising Stem, operated with Planet Gear
+ Handwheel / Square Cap

valve size	Gear ratio	valve torque / N.m (include 30% safety factor)	torque after gear / N.m (output torque of gear)	number of turns (valve)	number of turns (after planet gear)	Planet Gear + Handwheel + Top flange, suit for electric actuator
DN250	3 : 1	260	87	23	69	
DN300	4 : 1	325	81	27	108	
DN350	4 : 1	390	98	30.5	122	
DN400	4 : 1	455	114	34.5	138	
DN450	4 : 1	520	130	28.0	112	
DN500	4 : 1	585	146	32.5	130	
DN600	4 : 1	780	195	34.5	138	
DN700	6 : 1	910	152	40	240	
DN800	6 : 1	1170	195	45	270	
DN900	6 : 1	1170	195	57.3	344	
DN1000	6 : 1	1170	195	63.5	381	
DN1200	6 : 1	1560	260	101	608	

Resilient-Seated Gate Valve

Non-Rising Stem, operated with Planet Gear
+ Top flange with bareshaft for Gearbox / Actuator

valve size	top flange	D	K	H	d	b	D1 x f
DN250	F10	φ125	φ102	40	φ25	8x7	φ70x3
DN300	F10	φ125	φ102	40	φ25	8x7	φ70x3
DN350	F10	φ125	φ102	40	φ25	8x7	φ70x3
DN400	F10	φ125	φ102	40	φ25	8x7	φ70x3
DN450	F10	φ125	φ102	40	φ25	8x7	φ70x3
DN500	F10	φ125	φ102	40	φ25	8x7	φ70x3
DN600	F14	φ175	φ140	40	φ32	10x8	φ100x4
DN700	F14	φ175	φ140	40	φ32	10x8	φ100x4
DN800	F14	φ175	φ140	40	φ32	10x8	φ100x4
DN900	F14	φ175	φ140	40	φ32	10x8	φ100x4
DN1000	F14	φ175	φ140	40	φ32	10x8	φ100x4
DN1200	F14	φ175	φ140	40	φ32	10x8	φ100x4

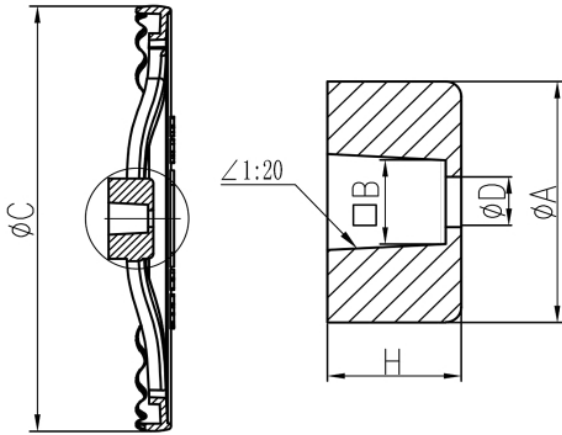


Designs, materials and specifications shown are subject to change without notice due to our continuing program of product development.

AE GATE VALVE

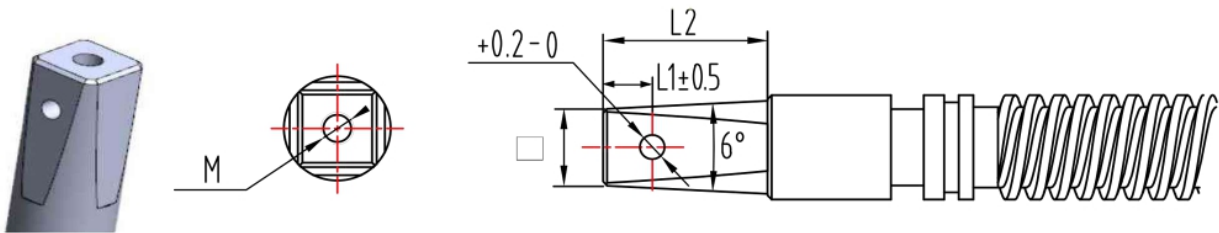


DI/steel Handwheel



valve size	ϕC	A	$\square B$	H
DN40-50	$\Phi 180$	32	$\square 14$	22
DN65-80	$\Phi 200$	37	$\square 17$	22
DN100	$\Phi 220$	43	$\square 19$	27
DN125	$\Phi 250$	43	$\square 19$	27
DN150	$\Phi 280$	43	$\square 19$	27
DN200	$\Phi 315$	43	$\square 24$	32
DN250-300	$\Phi 400$	60	$\square 27$	36
DN350-400	$\Phi 500$	60	$\square 27$	36
DN450-600	$\Phi 650$	85	$\square 32$	60

Stem end dimension customized dimension upon request



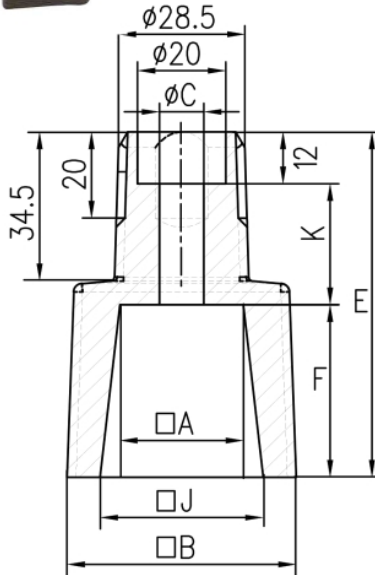
DN	ϕ	L1	L2	\square	M
DN40-50	$\phi 6$	12.5	32	14	M8
DN65	$\phi 6$	12.5	35	17	M8
DN80	$\phi 6$	12.5	35	17	M8
DN100	$\phi 6$	12.5	40	19	M8
DN125	$\phi 6$	12.5	40	19	M8
DN150	$\phi 6$	12.5	40	19	M8
DN200	$\phi 6$	12.5	45	24	M8
DN250	$\phi 6$	12.5	45	27	M10
DN300	$\phi 6$	12.5	45	27	M10
DN350	$\phi 6$	12.5	45	27	M10
DN400	$\phi 6$	12.5	45	27	M10
DN450	$\phi 6$	17.5	70	32	M10
DN500	$\phi 6$	17.5	70	32	M10
DN600	$\phi 6$	30	70	32	M12

Designs, materials and specifications shown are subject to change without notice due to our continuing program of product development.

AE GATE VALVE



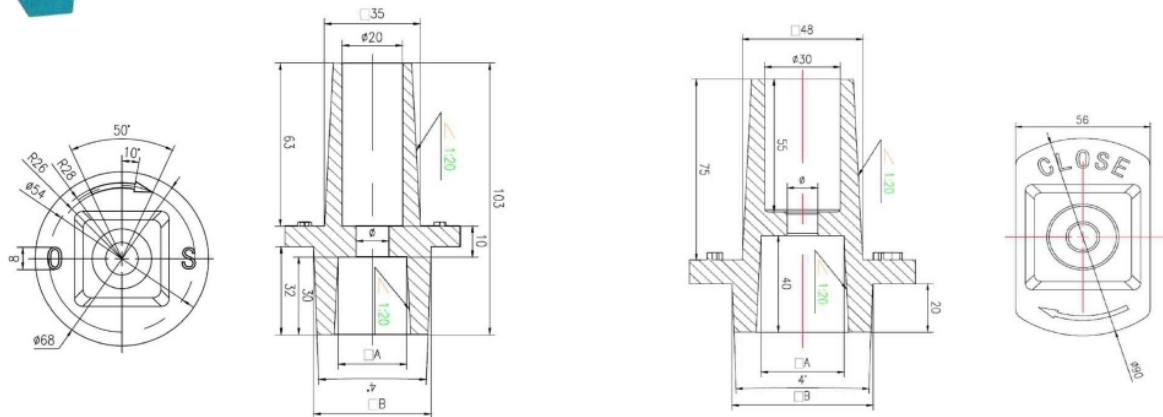
DIN Square Cap



valve size	□ A	□ B	φC	E	F	□ J	K	bolt 8.8 inox
DN20-32	□ 12	40	φ 8	40	20	□ 13	8	M6x25
DN40-50	□ 14	40	φ 10	40	22	□ 16	6	M8x20
DN65-80	□ 17	40	φ 10	48	30	□ 19.5	6	M8x20
DN100-150	□ 19	40	φ 10	50	30	□ 21.5	8	M8x25
DN200	□ 24	40	φ 10	74	34	□ 27	28	M8x45
DN250-400	□ 27	52	φ 12	80	38	□ 30.5	30	M10x45
DN500-600	□ 32	63.5	φ 12	98	49	□ 36.5	37	M10x55



BS Square Cap



Size	□ A	□ B	Φ
DN40-50	□ 14	□ 30	10
DN65-80	□ 17	□ 36	10
DN100-150	□ 19	□ 41	10
DN200	□ 24	□ 51	10
DN250-300	□ 27	□ 58	12

Size	□ A	□ B	Φ
DN350	□ 27	□ 56	12
DN400	□ 27	□ 56	12
DN450	□ 32	□ 56	12
DN500	□ 32	□ 56	12
DN600	□ 32	□ 56	12

Designs, materials and specifications shown are subject to change without notice due to our continuing program of product development.

AE GATE VALVE

Extension Spindle



Extension Spindle



Extension Spindle with protection tube



Operating T-Key

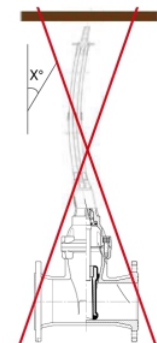
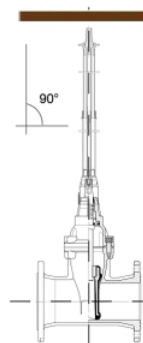
Mounting instruction TELESCOPIC EXTENSION SPINDLE



**DN 50-125:
Max. 200 Nm**

**DN 150-400:
Max. 400 Nm**

**DN 450-600:
Max. 500 Nm**





AE ANDERSON
EUROTECH
VALVES AND INSTRUMENTS

For Your Sales and After Sales, please contact:

Indonesia Sole Distributor

PT. Multi Sukses Pratama

Jl. Bandengan Utara No. 80
Rukan Bandengan Indah D No.20

Jakarta Utara, Indonesia

☎ (62) (21) 29379590, 29379591, 68292838, 8822918 (62)

☎ (21) 29379571

E-mail: sales@suksespratama.com